

Product datasheet for **TA385364**

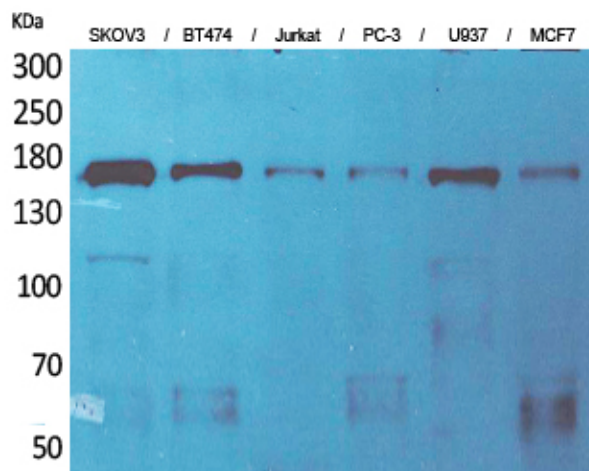
SYCP2 Rabbit Polyclonal Antibody

Product data:

Product Type:	Primary Antibodies
Applications:	ELISA, WB
Recommended Dilution:	WB: 1/500-1/2000 ELISA: 1/20000
Reactivity:	Human
Host:	Rabbit
Isotype:	IgG
Clonality:	Polyclonal
Immunogen:	Synthesized peptide derived from the Internal region of human SCP-2.
Formulation:	Liquid in PBS containing 50% glycerol, 0.5% BSA and 0.02% sodium azide, pH 7.3.
Concentration:	lot specific
Purification:	Affinity Purified
Conjugation:	Unconjugated
Storage:	Store at 4°C short term. Aliquot and store at -20°C long term. Avoid freeze/thaw cycles.
Stability:	1 year
Predicted Protein Size:	Observed MW (kDa):175
Database Link:	Q9BX26
Background:	Swiss-Prot Acc.Q9BX26.



[View online »](#)

Product images:

Western blot analysis of Synaptonemal Complex Protein 2 in SKOV-3, BT474, Jurkat, PC-3, U937, MCF-7 lysates using Synaptonemal Complex Protein 2 antibody.