

## Product datasheet for **TA385362S**

### Sumo 2 (SUMO2) Mouse Monoclonal Antibody [Clone ID: 3F7-C2-F8]

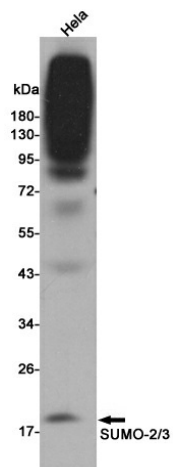
#### Product data:

Product Type:	Primary Antibodies
Clone Name:	3F7-C2-F8
Applications:	WB
Recommended Dilution:	WB: 1/1000
Reactivity:	Human
Host:	Mouse
Isotype:	IgG2b
Clonality:	Monoclonal
Immunogen:	Purified recombinant human SUMO-2/3 protein fragments expressed in E.coli.
Formulation:	Liquid in PBS containing 50% glycerol, 0.5% BSA and 0.03% Proclin 300, pH 7.3.
Concentration:	lot specific
Purification:	Affinity Purified
Conjugation:	Unconjugated
Storage:	Store at 4°C short term. Aliquot and store at -20°C long term. Avoid freeze/thaw cycles.
Stability:	1 year
Predicted Protein Size:	Refer to figures
Gene Name:	small ubiquitin-like modifier 2
Database Link:	<a href="#">Entrez Gene 6613 Human P61956</a>
Background:	Swiss-Prot Acc.P61956,P55854.SUMO proteins, such as Sumo 2 and Sumo 3, post-translationally modify numerous cellular proteins and affect their metabolism and function. However, unlike ubiquitination, which targets proteins for degradation, sumoylation participates in a number of cellular processes, such as nuclear transport, transcriptional regulation, apoptosis, and protein stability. Sumo 2 and Sumo 3 are highly homologous, hence it is very difficult to produce antibodies which distinguish them.
Synonyms:	HSMT3; MGC117191; Sentrin-2; SMT3B; SMT3H2; SUMO-2; SUMO-3



[View online »](#)

## Product images:



Western blot detection of SUMO-2/3 in HeLa cell lysates using SUMO-2/3 mouse mAb(dilution 1:1000).