

## Product datasheet for **TA385360M**

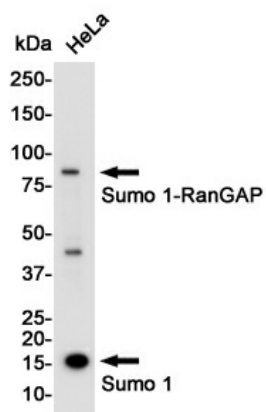
### Sumo 1 (SUMO1) Rabbit Polyclonal Antibody

#### Product data:

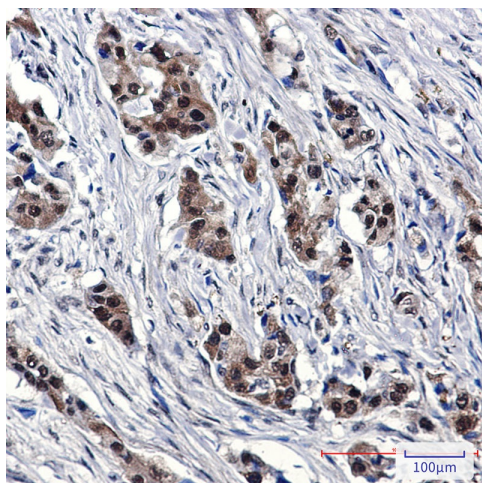
Product Type:	Primary Antibodies
Applications:	ChIP, FC, IHC, IP, WB
Recommended Dilution:	WB: 1/1000 IHC: 1/50 FC: 1/20 IP: 1/20 ChIP: 1/20
Reactivity:	Human
Host:	Rabbit
Isotype:	IgG
Clonality:	Polyclonal
Immunogen:	A synthetic peptide of human Sumo 1
Formulation:	50mM Tris-Glycine(pH 7.4), 0.15M NaCl, 40% Glycerol, 0.01% Sodium azide and 0.05% BSA
Concentration:	lot specific
Purification:	Affinity Purified
Conjugation:	Unconjugated
Storage:	Store at 4°C short term. Aliquot and store at -20°C long term. Avoid freeze/thaw cycles.
Stability:	1 year
Predicted Protein Size:	Calculated MW: 12 kDa; Observed MW: 80,12 kDa
Gene Name:	small ubiquitin-like modifier 1
Database Link:	<a href="#">Entrez Gene 7341 Human P63165</a>
Background:	Swiss-Prot Acc.P63165.
Synonyms:	DAP-1; GMP1; OFC10; PIC1; SENP2; Sentrin; SMT3; SMT3C; SMT3H3; SUMO-1; UBL1


[View online »](#)

## Product images:



Western blot analysis of SUMO1 in HeLa lysates using SUMO1 antibody.



Immunohistochemistry analysis of paraffin-embedded Human lung cancer using Sumo 1 antibody. High-pressure and temperature Sodium Citrate pH 6.0 was used for antigen retrieval.