

## Product datasheet for **TA385359M**

### Sumo 1 (SUMO1) Rabbit Polyclonal Antibody

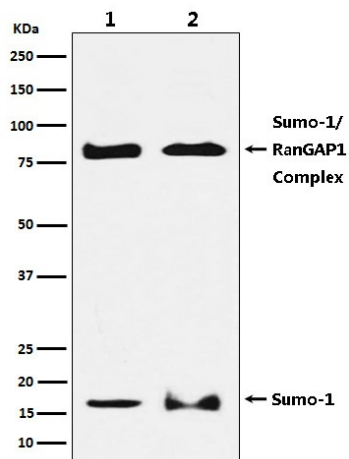
#### Product data:

Product Type:	Primary Antibodies
Applications:	FC, IF, IHC, IP, WB
Recommended Dilution:	WB: 1/500-1/2000 IHC: 1/50-1/200 ICC/IF: 1/50-1/200 IP: 1/50 FC: 1/50
Reactivity:	Human, Mouse, Rat
Host:	Rabbit
Isotype:	IgG
Clonality:	Polyclonal
Immunogen:	A synthesized peptide derived from human Sumo 1
Formulation:	Rabbit IgG in phosphate buffered saline , pH 7.4, 150mM NaCl, 0.02% sodium azide and 50% glycerol.
Concentration:	lot specific
Purification:	Affinity Chromatography
Conjugation:	Unconjugated
Storage:	Store at 4°C short term. Aliquot and store at -20°C long term. Avoid freeze/thaw cycles.
Stability:	1 year
Predicted Protein Size:	12kDa
Gene Name:	small ubiquitin-like modifier 1
Database Link:	<a href="#">Entrez Gene 7341 Human P63165</a>
Background:	Swiss-Prot Acc.P63165.SUMO1 Ubiquitin-like protein which can be covalently attached to target lysines as a monomer. Does not seem to be involved in protein degradation and may function as an antagonist of ubiquitin in the degradation process. Plays a role in a number of cellular processes such as nuclear transport, DNA replication and repair, mitosis and signal transduction.

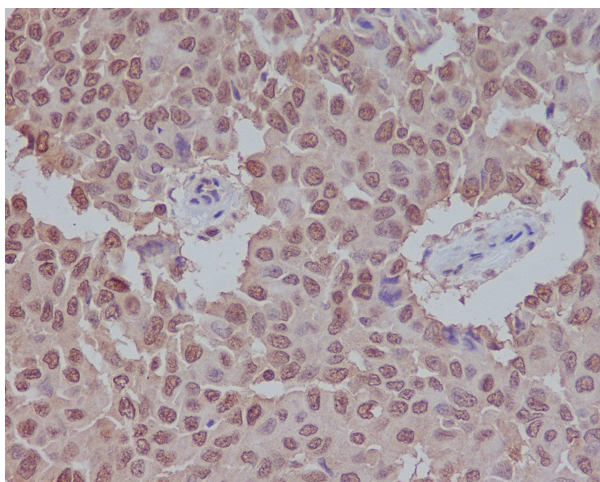

[View online »](#)

**Synonyms:** DAP-1; GMP1; OFC10; PIC1; SENP2; Sentrin; SMT3; SMT3C; SMT3H3; SUMO-1; UBL1

## Product images:



Western blot analysis of SUMO1 in (1) HeLa lysates; (2) NIH/3T3 lysates using SUMO1 antibody.



Immunohistochemistry analysis of paraffin-embedded Human breast carcinoma using Sumo 1 antibody. High-pressure and temperature Sodium Citrate pH 6.0 was used for antigen retrieval.