

Product datasheet for **TA385357S**

Syntaxin 4 (STX4) Rabbit Monoclonal Antibody [Clone ID: R07-1G2]

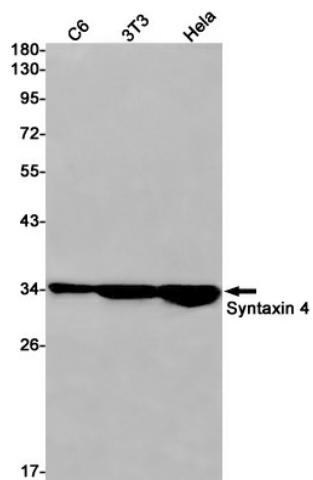
Product data:

Product Type:	Primary Antibodies
Clone Name:	R07-1G2
Applications:	WB
Recommended Dilution:	WB: 1/1000
Reactivity:	Human, Mouse, Rat
Host:	Rabbit
Isotype:	IgG
Clonality:	Monoclonal
Immunogen:	A synthetic peptide of human Syntaxin 4
Formulation:	50mM Tris-Glycine(pH 7.4), 0.15M NaCl, 40% Glycerol, 0.01% Sodium azide and 0.05% BSA
Concentration:	lot specific
Purification:	Affinity Purified
Conjugation:	Unconjugated
Storage:	Store at 4°C short term. Aliquot and store at -20°C long term. Avoid freeze/thaw cycles.
Stability:	1 year
Predicted Protein Size:	Calculated MW: 34 kDa; Observed MW: 34 kDa
Gene Name:	syntaxin 4
Database Link:	Entrez Gene 6810 Human Q12846
Background:	Swiss-Prot Acc.Q12846. Plasma membrane t-SNARE that mediates docking of transport vesicles. Necessary for the translocation of SLC2A4 from intracellular vesicles to the plasma membrane. Together with STXB3 and VAMP2, may also play a role in docking/fusion of intracellular GLUT4-containing vesicles with the cell surface in adipocytes. May also play a role in docking of synaptic vesicles at presynaptic active zones.
Synonyms:	p35-2; STX4A



[View online »](#)

Product images:



Western blot analysis of Syntaxin 4 in C6, 3T3, HeLa lysates using Syntaxin 4 antibody.