

## Product datasheet for **TA385353**

### Stathmin 1 (STMN1) Rabbit Polyclonal Antibody

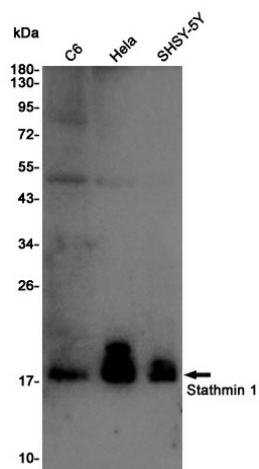
#### Product data:

Product Type:	Primary Antibodies
Applications:	FC, IHC, IP, WB
Recommended Dilution:	WB: 1/1000 IHC: 1/20 FC: 1/20 IP: 1/20
Reactivity:	Human, Rat
Host:	Rabbit
Isotype:	IgG
Clonality:	Polyclonal
Immunogen:	A synthetic peptide of human Stathmin 1
Formulation:	50mM Tris-Glycine(pH 7.4), 0.15M NaCl, 40% Glycerol, 0.01% Sodium azide and 0.05% BSA
Concentration:	lot specific
Purification:	Affinity Purified
Conjugation:	Unconjugated
Storage:	Store at 4°C short term. Aliquot and store at -20°C long term. Avoid freeze/thaw cycles.
Stability:	1 year
Predicted Protein Size:	Calculated MW: 17 kDa; Observed MW: 17 kDa
Gene Name:	stathmin 1
Database Link:	<a href="#">Entrez Gene 3925 Human P16949</a>
Background:	Swiss-Prot Acc.P16949.
Synonyms:	C1orf215; FLJ32206; Lag; LAP18; metablastin; MGC138869; MGC138870; OP18; OTTHUMP00000008530; PP17; PP19; PR22; prosolin; SMN

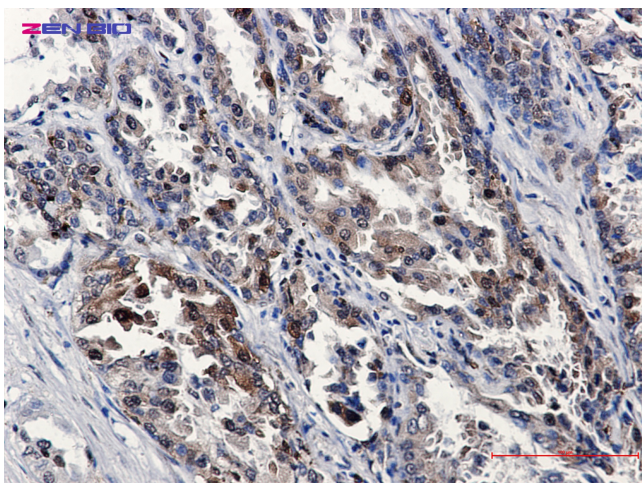


[View online »](#)

## Product images:



Western blot detection of Stathmin 1 in C6, HeLa, SHSY-5Y cell lysates using Stathmin 1 Rabbit pAb (1:1000 diluted). Predicted band size: 17 kDa. Observed band size: 17 kDa.



Immunohistochemistry of Stathmin 1 in paraffin-embedded human lung cancer tissue using Stathmin 1 Rabbit pAb at dilution 1/20.