

Product datasheet for **TA385352**

Stathmin 1 (STMN1) Rabbit Polyclonal Antibody

Product data:

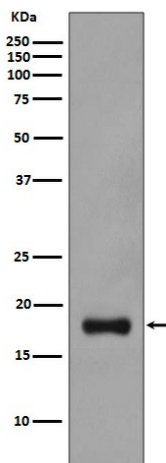
Product Type:	Primary Antibodies
Applications:	FC, IF, IHC, IP, WB
Recommended Dilution:	WB: 1/500-1/2000 IHC: 1/50-1/100 ICC/IF: 1/50-1/100 IP: 1/ FC: 1/50
Reactivity:	Human, Mouse, Rat
Host:	Rabbit
Isotype:	IgG
Clonality:	Polyclonal
Immunogen:	A synthesized peptide derived from human Stathmin 1
Formulation:	Rabbit IgG in phosphate buffered saline , pH 7.4, 150mM NaCl, 0.02% sodium azide and 50% glycerol.
Concentration:	lot specific
Purification:	Affinity Chromatography
Conjugation:	Unconjugated
Storage:	Store at 4°C short term. Aliquot and store at -20°C long term. Avoid freeze/thaw cycles.
Stability:	1 year
Predicted Protein Size:	18kDa
Gene Name:	stathmin 1
Database Link:	Entrez Gene 3925 Human P16949
Background:	Swiss-Prot Acc.P16949.Involved in the regulation of the microtubule (MT) filament system by destabilizing microtubules. Prevents assembly and promotes disassembly of microtubules. Phosphorylation at Ser-16 may be required for axon formation during neurogenesis. Involved in the control of the learned and innate fear.



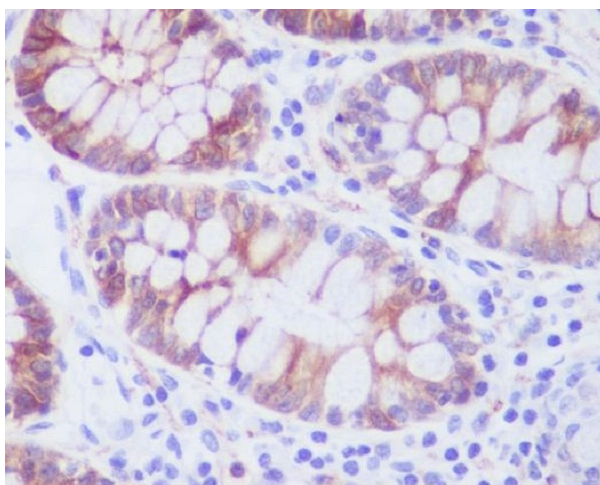
[View online »](#)

Synonyms: C1orf215; FLJ32206; Lag; LAP18; metablastin; MGC138869; MGC138870; OP18; OTTHUMP00000008530; PP17; PP19; PR22; prosolin; SMN

Product images:



Western blot analysis of Stathmin 1 in PC-12 lysates using Stathmin 1 antibody.



Immunohistochemistry analysis of paraffin-embedded Human colon using Stathmin 1 antibody. High-pressure and temperature Sodium Citrate pH 6.0 was used for antigen retrieval.