

Product datasheet for **TA385350**

STK3 Rabbit Polyclonal Antibody

Product data:

| | |
|-------------------------|--|
| Product Type: | Primary Antibodies |
| Applications: | IHC, IP, WB |
| Recommended Dilution: | WB: 1/1000-1/5000 IHC: 1/50-1/100 IP: 1/50 |
| Reactivity: | Human, Mouse, Rat |
| Host: | Rabbit |
| Isotype: | IgG |
| Clonality: | Polyclonal |
| Immunogen: | A synthesized peptide derived from human STK3 |
| Formulation: | Rabbit IgG in phosphate buffered saline , pH 7.4, 150mM NaCl, 0.02% sodium azide and 50% glycerol. |
| Concentration: | lot specific |
| Purification: | Affinity Chromatography |
| Conjugation: | Unconjugated |
| Storage: | Store at 4°C short term. Aliquot and store at -20°C long term. Avoid freeze/thaw cycles. |
| Stability: | 1 year |
| Predicted Protein Size: | 56kDa |
| Gene Name: | serine/threonine kinase 3 |
| Database Link: | Entrez Gene 6788 Human Q13188 |



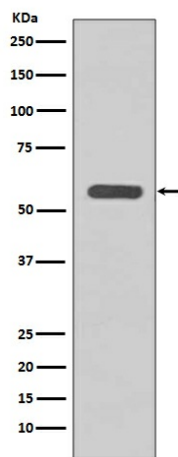
[View online »](#)

Background:

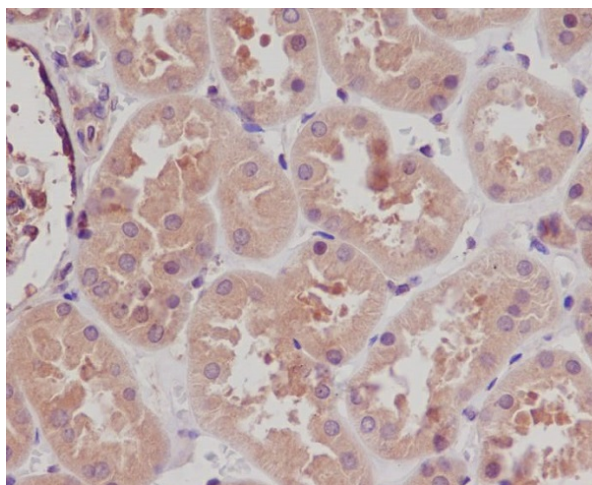
Swiss-Prot Acc.Q13188. Stress-activated, pro-apoptotic kinase which, following caspase-cleavage, enters the nucleus and induces chromatin condensation followed by internucleosomal DNA fragmentation. Key component of the Hippo signaling pathway which plays a pivotal role in organ size control and tumor suppression by restricting proliferation and promoting apoptosis. The core of this pathway is composed of a kinase cascade wherein STK3/MST2 and STK4/MST1, in complex with its regulatory protein SAV1, phosphorylates and activates LATS1/2 in complex with its regulatory protein MOB1, which in turn phosphorylates and inactivates YAP1 oncoprotein and WWTR1/TAZ.

Synonyms:

FLJ90748; KRS1; MST-2; MST2

Product images:

Western blot analysis of STK3 in HeLa lysates using STK3 antibody.



Immunohistochemistry analysis of paraffin-embedded Human kidney using STK3 antibody. High-pressure and temperature Sodium Citrate pH 6.0 was used for antigen retrieval.