

Product datasheet for **TA385348S**

STIP1 Rabbit Monoclonal Antibody [Clone ID: R04-3H1]

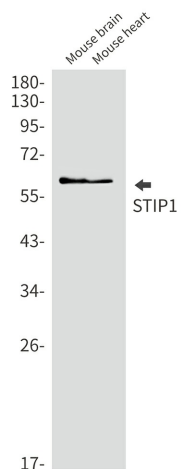
Product data:

Product Type:	Primary Antibodies
Clone Name:	R04-3H1
Applications:	IHC, IP, WB
Recommended Dilution:	WB: 1/2000-1/10000 IHC: 1/20 IP: 1/20
Reactivity:	Human, Mouse, Rat
Host:	Rabbit
Isotype:	IgG
Clonality:	Monoclonal
Immunogen:	A synthetic peptide of human STIP1
Formulation:	50mM Tris-Glycine(pH 7.4), 0.15M NaCl, 40% Glycerol, 0.01% Sodium azide and 0.05% BSA
Concentration:	lot specific
Purification:	Affinity Purified
Conjugation:	Unconjugated
Storage:	Store at 4°C short term. Aliquot and store at -20°C long term. Avoid freeze/thaw cycles.
Stability:	1 year
Predicted Protein Size:	Calculated MW: 63 kDa; Observed MW: 63 kDa
Gene Name:	stress induced phosphoprotein 1
Database Link:	Entrez Gene 10963 Human P31948
Background:	Swiss-Prot Acc.P31948.Acts as a co-chaperone for HSP90AA1 (PubMed:27353360). Mediates the association of the molecular chaperones HSPA8/HSC70 and HSP90 .
Synonyms:	HOP; IEF-SSP-3521; P60; STI1; STI1L

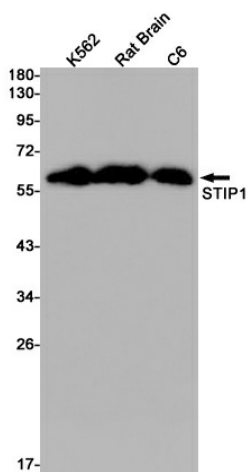


[View online »](#)

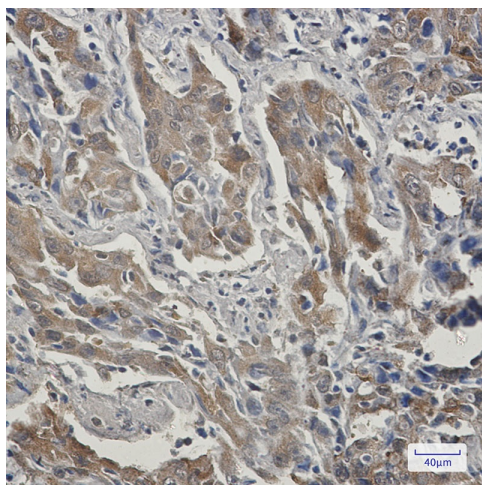
Product images:



Western blot analysis of STIP1 in mouse brain, mouse heart lysates using STIP1 antibody.



Western blot analysis of STIP1 in K562, rat Brain, C6 lysates using STIP1 antibody.



Immunohistochemistry analysis of paraffin-embedded Human lung cancer using STIP1 antibody. High-pressure and temperature Sodium Citrate pH 6.0 was used for antigen retrieval.