

## Product datasheet for **TA385347**

### STIP1 Rabbit Polyclonal Antibody

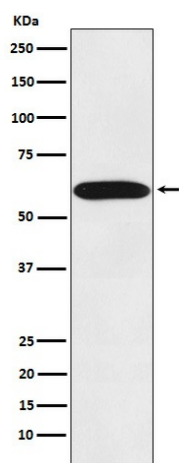
#### Product data:

Product Type:	Primary Antibodies
Applications:	FC, IF, IHC, IP, WB
Recommended Dilution:	WB: 1/1000-1/5000 IHC: 1/50-1/200 ICC/IF: 1/50-1/200 IP: 1/50 FC: 1/80
Reactivity:	Human, Mouse, Rat
Host:	Rabbit
Isotype:	IgG
Clonality:	Polyclonal
Immunogen:	A synthesized peptide derived from human STIP1
Formulation:	Rabbit IgG in phosphate buffered saline , pH 7.4, 150mM NaCl, 0.02% sodium azide and 50% glycerol.
Concentration:	lot specific
Purification:	Affinity Chromatography
Conjugation:	Unconjugated
Storage:	Store at 4°C short term. Aliquot and store at -20°C long term. Avoid freeze/thaw cycles.
Stability:	1 year
Predicted Protein Size:	63kDa
Gene Name:	stress induced phosphoprotein 1
Database Link:	<a href="#">Entrez Gene 10963 Human P31948</a>
Background:	Swiss-Prot Acc.P31948.Mediates the association of the molecular chaperones HSC70 and HSP90 (HSPCA and HSPCB).
Synonyms:	HOP; IEF-SSP-3521; P60; STI1; STI1L



[View online »](#)

## Product images:



Western blot analysis of STIP1 in Jurkat lysates using STIP1 antibody.