

Product datasheet for **TA385345**

Stromal interaction molecule 1 (STIM1) Rabbit Polyclonal Antibody

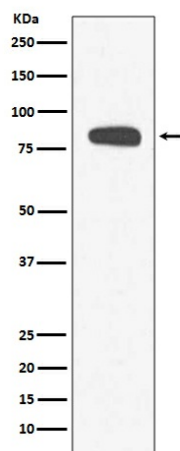
Product data:

Product Type:	Primary Antibodies
Applications:	IHC, IP, WB
Recommended Dilution:	WB: 1/1000-1/2000 IHC: 1/50-1/200 IP: 1/50
Reactivity:	Human, Mouse, Rat
Host:	Rabbit
Isotype:	IgG
Clonality:	Polyclonal
Immunogen:	A synthesized peptide derived from human Stromal interaction molecule 1
Formulation:	Rabbit IgG in phosphate buffered saline , pH 7.4, 150mM NaCl, 0.02% sodium azide and 50% glycerol.
Concentration:	lot specific
Purification:	Affinity Chromatography
Conjugation:	Unconjugated
Storage:	Store at 4°C short term. Aliquot and store at -20°C long term. Avoid freeze/thaw cycles.
Stability:	1 year
Predicted Protein Size:	77kDa
Gene Name:	stromal interaction molecule 1
Database Link:	Entrez Gene 6786 Human Q13586
Background:	Swiss-Prot Acc.Q13586.STIM1 is a potential tumor suppressor; defects in STIM1 may cause rhabdomyosarcoma and rhabdoid tumors. STIM1 can either homodimerize or form heterodimers with STIM2. STIM2 possesses a high sequence identity to STIM1 and can function as an inhibitor of STIM1-mediated plasma membrane store-operated Ca ²⁺ entry. However, further investigation is required to elucidate the true physiological function of STIM2.
Synonyms:	D11S4896E; GOK



[View online »](#)

Product images:



Western blot analysis of Stromal interaction molecule 1 in HeLa lysates using Stromal Interaction Molecule 1 antibody.