

Product datasheet for **TA385344**

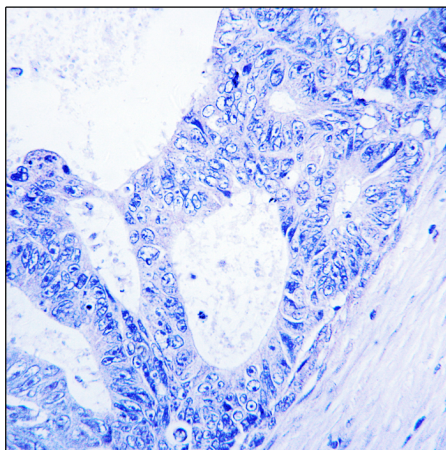
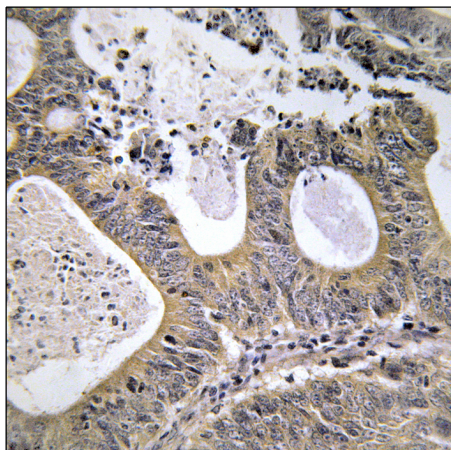
STEAP2 Rabbit Polyclonal Antibody

Product data:

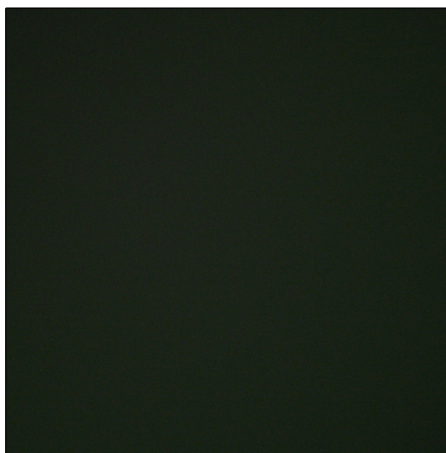
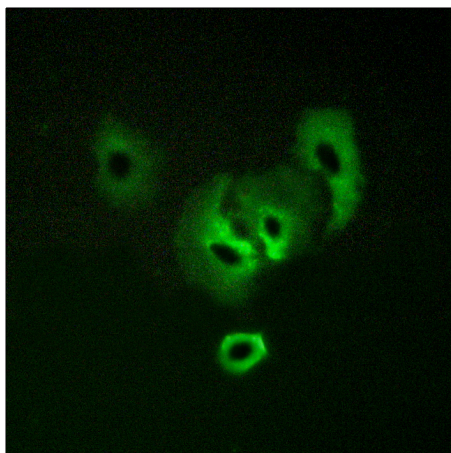
Product Type:	Primary Antibodies
Applications:	ELISA, IF, IHC
Recommended Dilution:	IHC: 1/100-1/300 IF: 1/200-1/1000 ELISA: 1/10000
Reactivity:	Human, Mouse
Host:	Rabbit
Isotype:	IgG
Clonality:	Polyclonal
Immunogen:	The antiserum was produced against synthesized peptide derived from human STEA2. AA range:431-480
Formulation:	Liquid in PBS containing 50% glycerol, 0.5% BSA and 0.02% sodium azide, pH 7.3.
Concentration:	lot specific
Purification:	Affinity Chromatography
Conjugation:	Unconjugated
Storage:	Store at 4°C short term. Aliquot and store at -20°C long term. Avoid freeze/thaw cycles.
Stability:	1 year
Database Link:	Q8NFT2
Background:	Swiss-Prot Acc.Q8NFT2.Metalloreductase that has the ability to reduce both Fe ³⁺ to Fe ²⁺ and Cu ²⁺ to Cu ¹⁺ . Uses NAD ⁺ as acceptor .



[View online »](#)

Product images:

Immunohistochemical analysis of paraffin-embedded Human tonsils using STEAP2 antibody. Sample with blocking peptide on the right. High-pressure and temperature Sodium Citrate pH 6.0 was used for antigen retrieval.



Immunofluorescence analysis of STEAP2 in A549 cells using STEAP2 antibody. Sample with blocking peptide on the right.