

## Product datasheet for **TA385343S**

### Staufen (STAU1) Rabbit Monoclonal Antibody [Clone ID: R03-3G2]

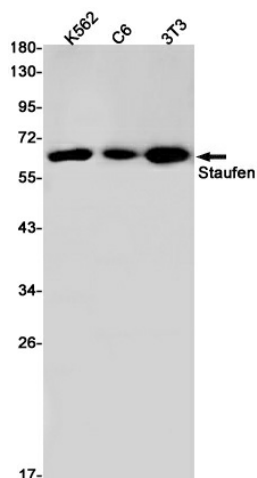
#### Product data:

Product Type:	Primary Antibodies
Clone Name:	R03-3G2
Applications:	IHC, WB
Recommended Dilution:	WB: 1/1000-1/5000 IHC: 1/500-1/500
Reactivity:	Human, Mouse, Rat
Host:	Rabbit
Isotype:	IgG
Clonality:	Monoclonal
Immunogen:	A synthetic peptide of human Staufen
Formulation:	50mM Tris-Glycine(pH 7.4), 0.15M NaCl, 40% Glycerol, 0.01% Sodium azide and 0.05% BSA
Concentration:	lot specific
Purification:	Affinity Purified
Conjugation:	Unconjugated
Storage:	Store at 4°C short term. Aliquot and store at -20°C long term. Avoid freeze/thaw cycles.
Stability:	1 year
Predicted Protein Size:	Calculated MW: 63 kDa; Observed MW: 63 kDa
Gene Name:	staufen double-stranded RNA binding protein 1
Database Link:	<a href="#">Entrez Gene 6780 Human O95793</a>
Background:	Swiss-Prot Acc.O95793.Binds double-stranded RNA (regardless of the sequence) and tubulin. May play a role in specific positioning of mRNAs at given sites in the cell by cross-linking cytoskeletal and RNA components, and in stimulating their translation at the site.
Synonyms:	FLJ25010; OTTHUMP00000031236; OTTHUMP00000031238; STAU; staufen

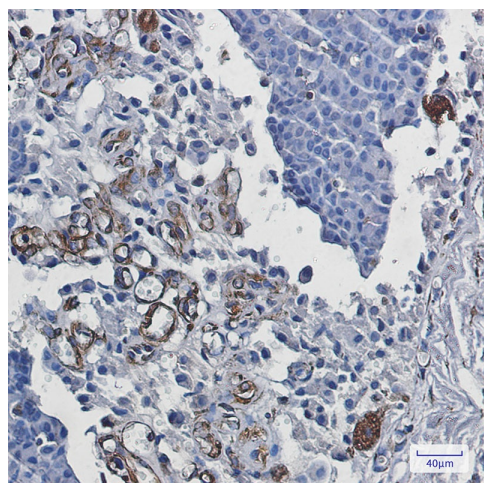


[View online »](#)

## Product images:



Western blot analysis of Staufen in K562, C6, 3T3 lysates using Staufen antibody.



Immunohistochemistry analysis of paraffin-embedded Human breast cancer using Staufen antibody. High-pressure and temperature Sodium Citrate pH 6.0 was used for antigen retrieval.