

Product datasheet for **TA385342**

Staufen (STAU1) Rabbit Polyclonal Antibody

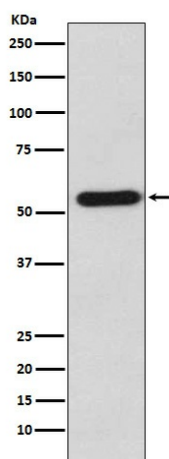
Product data:

Product Type:	Primary Antibodies
Applications:	FC, IF, WB
Recommended Dilution:	WB: 1/500-1/2000 ICC/IF: 1/50-1/200 FC: 1/500
Reactivity:	Human, Mouse, Rat
Host:	Rabbit
Isotype:	IgG
Clonality:	Polyclonal
Immunogen:	A synthesized peptide derived from human Staufen
Formulation:	Rabbit IgG in phosphate buffered saline , pH 7.4, 150mM NaCl, 0.02% sodium azide and 50% glycerol.
Concentration:	lot specific
Purification:	Affinity Chromatography
Conjugation:	Unconjugated
Storage:	Store at 4°C short term. Aliquot and store at -20°C long term. Avoid freeze/thaw cycles.
Stability:	1 year
Predicted Protein Size:	55kDa
Gene Name:	staufen double-stranded RNA binding protein 1
Database Link:	Entrez Gene 6780 Human O95793
Background:	Swiss-Prot Acc.O95793.Binds double-stranded RNA (regardless of the sequence) and tubulin. May play a role in specific positioning of mRNAs at given sites in the cell by cross-linking cytoskeletal and RNA components, and in stimulating their translation at the site.
Synonyms:	FLJ25010; OTTHUMP00000031236; OTTHUMP00000031238; STAU; staufen



[View online »](#)

Product images:



Western blot analysis of Staufen in K562 lysates using Staufen antibody.