

Product datasheet for **TA385341**

STAT6 Rabbit Polyclonal Antibody

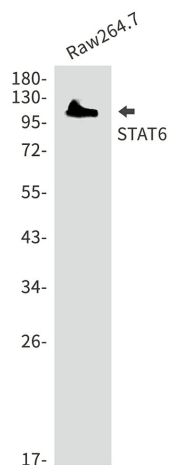
Product data:

Product Type:	Primary Antibodies
Applications:	FC, IF, IHC, IP, WB
Recommended Dilution:	WB: 1/1000 IHC: 1/20 ICC/IF: 1/20 FC: 1/20 IP: 1/20
Reactivity:	Mouse
Host:	Rabbit
Isotype:	IgG
Clonality:	Polyclonal
Immunogen:	A synthetic peptide of human STAT6
Formulation:	50mM Tris-Glycine(pH 7.4), 0.15M NaCl, 40% Glycerol, 0.01% Sodium azide and 0.05% BSA
Concentration:	lot specific
Purification:	Affinity Purified
Conjugation:	Unconjugated
Storage:	Store at 4°C short term. Aliquot and store at -20°C long term. Avoid freeze/thaw cycles.
Stability:	1 year
Predicted Protein Size:	Calculated MW: 94 kDa; Observed MW: 110 kDa
Gene Name:	signal transducer and activator of transcription 6
Database Link:	P42226
Background:	Swiss-Prot Acc.P42226.
Synonyms:	D12S1644; IL-4-STAT; STAT6B; STAT6C



[View online »](#)

Product images:



Western blot analysis of STAT6 in Raw264.7 lysates using STAT6 antibody.