

Product datasheet for **TA385340S**

STAT5B Rabbit Monoclonal Antibody [Clone ID: R08-2I8]

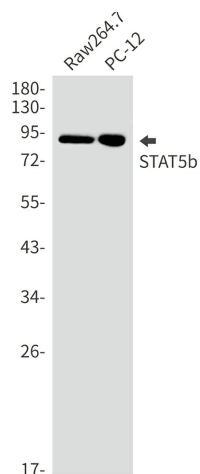
Product data:

| | |
|-------------------------|--|
| Product Type: | Primary Antibodies |
| Clone Name: | R08-2I8 |
| Applications: | IF, IHC, IP, WB |
| Recommended Dilution: | WB: 1/2000 IHC: 1/100 ICC/IF: 1/20 IP: 1/20 |
| Reactivity: | Human, Mouse, Rat |
| Host: | Rabbit |
| Isotype: | IgG |
| Clonality: | Monoclonal |
| Immunogen: | Recombinant protein of human STAT5b |
| Formulation: | 50mM Tris-Glycine(pH 7.4), 0.15M NaCl, 40% Glycerol, 0.01% Sodium azide and 0.05% BSA |
| Concentration: | lot specific |
| Purification: | Affinity Purified |
| Conjugation: | Unconjugated |
| Storage: | Store at 4°C short term. Aliquot and store at -20°C long term. Avoid freeze/thaw cycles. |
| Stability: | 1 year |
| Predicted Protein Size: | Calculated MW:90 kDa,Observed MW:90 kDa |
| Gene Name: | signal transducer and activator of transcription 5B |
| Database Link: | Entrez Gene 6777 Human P51692 |
| Synonyms: | STAT5 |

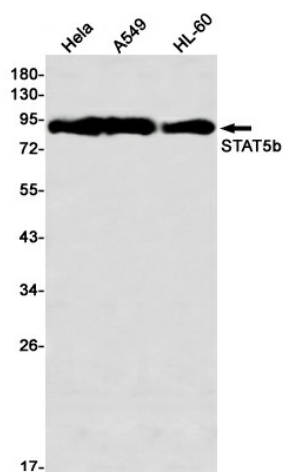


[View online »](#)

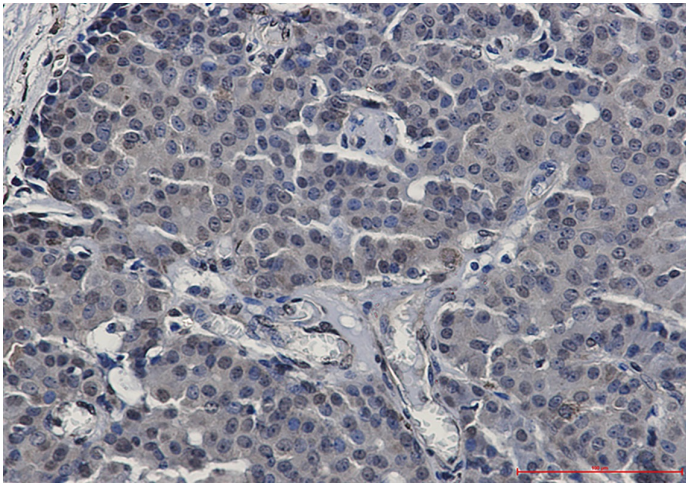
Product images:



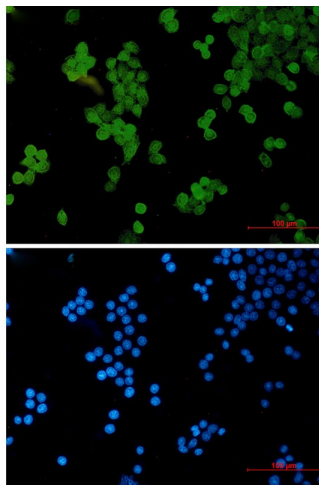
Western blot analysis of STAT5b in Raw264.7, PC-12 lysates using STAT5b antibody.



Western blot analysis of STAT5b in HeLa, A549, HL-60 lysates using STAT5b antibody



Immunohistochemistry analysis of paraffin-embedded Human breast cancer using STAT5b antibody. High-pressure and temperature Sodium Citrate pH 6.0 was used for antigen retrieval.



Immunocytochemistry analysis of STAT5b (green) in HeLa using STAT5b antibody, and DAPI (blue).