

## Product datasheet for **TA385340**

### STAT5B Rabbit Monoclonal Antibody [Clone ID: R08-2I8]

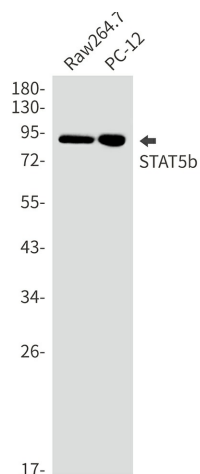
#### Product data:

Product Type:	Primary Antibodies
Clone Name:	R08-2I8
Applications:	IF, IHC, IP, WB
Recommended Dilution:	WB: 1/2000 IHC: 1/100 ICC/IF: 1/20 IP: 1/20
Reactivity:	Human, Mouse, Rat
Host:	Rabbit
Isotype:	IgG
Clonality:	Monoclonal
Immunogen:	Recombinant protein of human STAT5b
Formulation:	50mM Tris-Glycine(pH 7.4), 0.15M NaCl, 40% Glycerol, 0.01% Sodium azide and 0.05% BSA
Concentration:	lot specific
Purification:	Affinity Purified
Conjugation:	Unconjugated
Storage:	Store at 4°C short term. Aliquot and store at -20°C long term. Avoid freeze/thaw cycles.
Stability:	1 year
Predicted Protein Size:	Calculated MW:90 kDa,Observed MW:90 kDa
Gene Name:	signal transducer and activator of transcription 5B
Database Link:	<a href="#">Entrez Gene 6777 Human P51692</a>
Synonyms:	STAT5

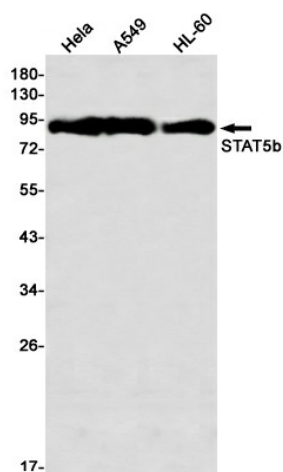


[View online »](#)

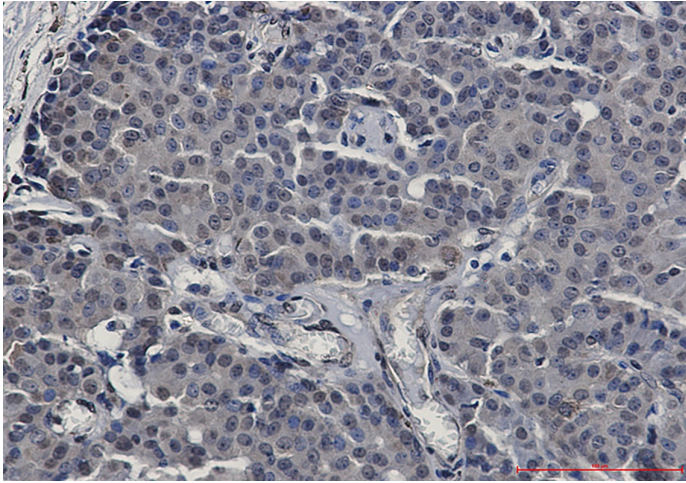
## Product images:



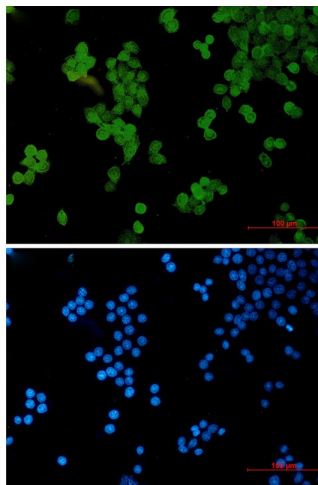
Western blot analysis of STAT5b in Raw264.7, PC-12 lysates using STAT5b antibody.



Western blot analysis of STAT5b in HeLa, A549, HL-60 lysates using STAT5b antibody



Immunohistochemistry analysis of paraffin-embedded Human breast cancer using STAT5b antibody. High-pressure and temperature Sodium Citrate pH 6.0 was used for antigen retrieval.



Immunocytochemistry analysis of STAT5b (green) in HeLa using STAT5b antibody, and DAPI (blue).