

## Product datasheet for **TA385337M**

### STAT3 Rabbit Monoclonal Antibody [Clone ID: R01-9G3]

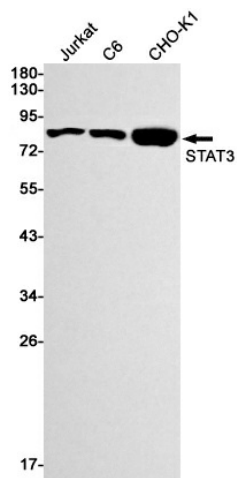
#### Product data:

Product Type:	Primary Antibodies
Clone Name:	R01-9G3
Applications:	IF, IP, WB
Recommended Dilution:	WB: 1/1000 ICC/IF: 1/50 IP: 1/20
Reactivity:	Human
Host:	Rabbit
Isotype:	IgG
Clonality:	Monoclonal
Immunogen:	A synthetic peptide of human STAT3
Formulation:	50mM Tris-Glycine(pH 7.4), 0.15M NaCl, 40% Glycerol, 0.01% Sodium azide and 0.05% BSA
Concentration:	lot specific
Purification:	Affinity Purified
Conjugation:	Unconjugated
Storage:	Store at 4°C short term. Aliquot and store at -20°C long term. Avoid freeze/thaw cycles.
Stability:	1 year
Predicted Protein Size:	Calculated MW: 88 kDa; Observed MW: 88 kDa
Gene Name:	signal transducer and activator of transcription 3
Database Link:	<a href="#">Entrez Gene 6774 Human P40763</a>
Background:	Swiss-Prot Acc.P40763.
Synonyms:	APRF; FLJ20882; HIES; MGC16063

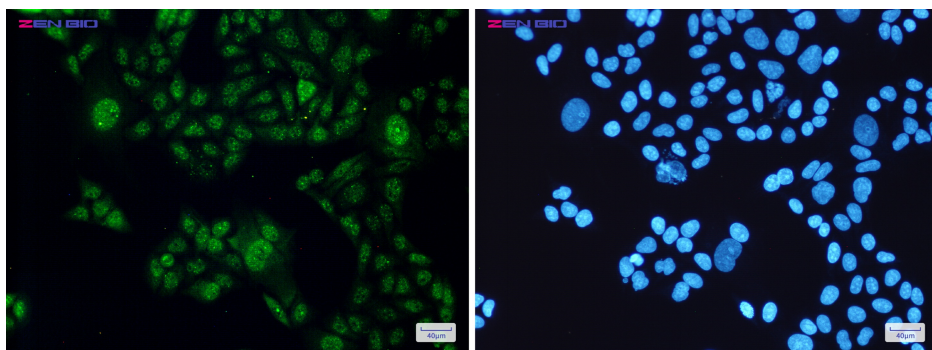


[View online »](#)

## Product images:



Western blot detection of STAT3 in Jurkat, C6, CHO-K1 cell lysates using STAT3 Rabbit mAb (1:1000 diluted). Predicted band size: 88 kDa. Observed band size: 88 kDa.



Immunocytochemistry of STAT3 (green) in HeLa cells using STAT3 Rabbit mAb at dilution 1/200, and DAPI (blue)