

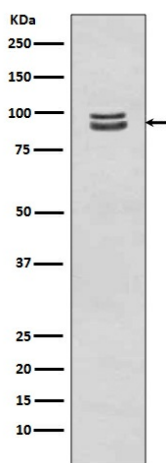
Product datasheet for **TA385336M**

STAT3 Rabbit Polyclonal Antibody

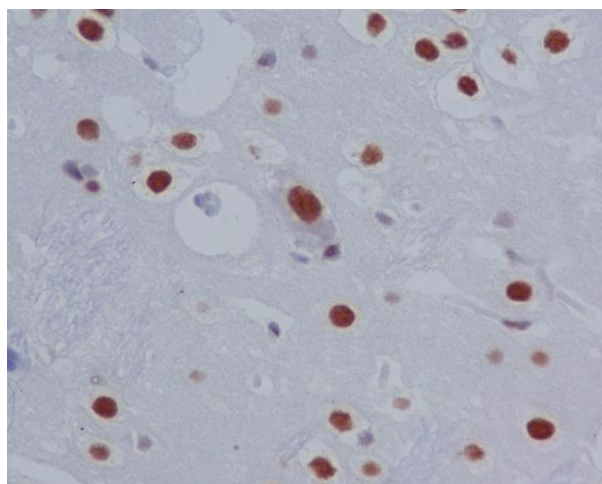
Product data:

Product Type:	Primary Antibodies
Applications:	IF, IHC, IP, WB
Recommended Dilution:	WB: 1/1000-1/2000 IHC: 1/50-1/200 ICC/IF: 1/50-1/200 IP: 1/50
Reactivity:	Human, Rat
Host:	Rabbit
Isotype:	IgG
Clonality:	Polyclonal
Immunogen:	A synthesized peptide derived from human Phospho-STAT3 (S727) (Phosphorylated)
Formulation:	Rabbit IgG in phosphate buffered saline , pH 7.4, 150mM NaCl, 0.02% sodium azide and 50% glycerol.
Concentration:	lot specific
Purification:	Affinity Chromatography
Conjugation:	Unconjugated
Storage:	Store at 4°C short term. Aliquot and store at -20°C long term. Avoid freeze/thaw cycles.
Stability:	1 year
Predicted Protein Size:	98kDa
Gene Name:	signal transducer and activator of transcription 3
Database Link:	Entrez Gene 6774 Human P40763
Background:	Swiss-Prot Acc.P40763.Signal transducer and transcription activator that mediates cellular responses to interleukins, KITLG/SCF and other growth factors. May mediate cellular responses to activated FGFR1, FGFR2, FGFR3 and FGFR4. Binds to the interleukin-6 (IL-6)-responsive elements identified in the promoters of various acute-phase protein genes. Activated by IL31 through IL31RA.
Synonyms:	APRF; FLJ20882; HIES; MGC16063


[View online »](#)

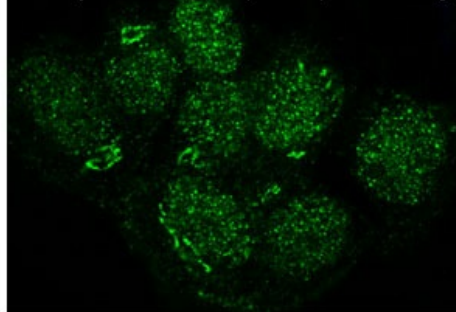
Product images:


Western blot analysis of Phospho-STAT3 (S727) in A431 lysates treated with EGF using Phospho-STAT3 (Ser727) antibody.

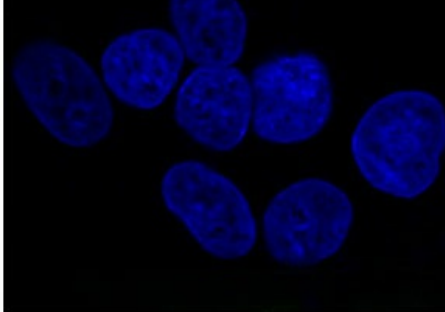


Immunohistochemistry analysis of paraffin-embedded rat brain using Phospho-STAT3 (S727) antibody. High-pressure and temperature Sodium Citrate pH 6.0 was used for antigen retrieval.

Phospho-STAT3 (S727) Antibody



DAPI



Immunofluorescence analysis of Phospho-STAT3 (Ser727) in A431 treated with EGF using Phospho-STAT3 (S727) antibody.