

Product datasheet for **TA385336**

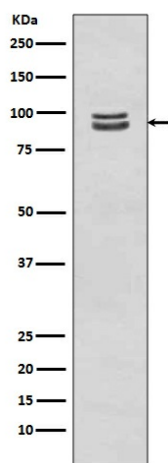
STAT3 Rabbit Polyclonal Antibody

Product data:

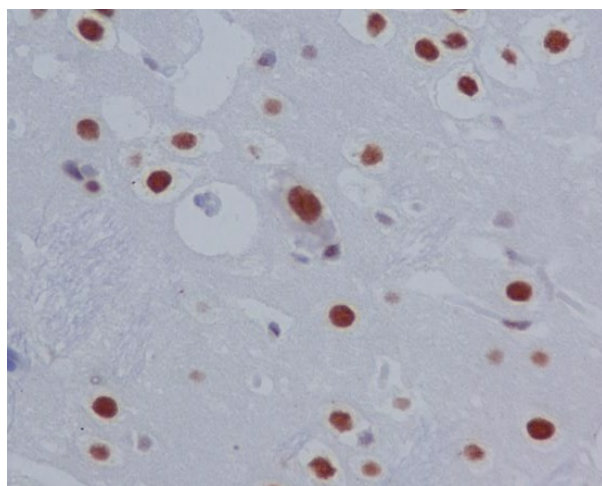
| | |
|-------------------------|--|
| Product Type: | Primary Antibodies |
| Applications: | IF, IHC, IP, WB |
| Recommended Dilution: | WB: 1/1000-1/2000 IHC: 1/50-1/200 ICC/IF: 1/50-1/200 IP: 1/50 |
| Reactivity: | Human, Rat |
| Host: | Rabbit |
| Isotype: | IgG |
| Clonality: | Polyclonal |
| Immunogen: | A synthesized peptide derived from human Phospho-STAT3 (S727) (Phosphorylated) |
| Formulation: | Rabbit IgG in phosphate buffered saline , pH 7.4, 150mM NaCl, 0.02% sodium azide and 50% glycerol. |
| Concentration: | lot specific |
| Purification: | Affinity Chromatography |
| Conjugation: | Unconjugated |
| Storage: | Store at 4°C short term. Aliquot and store at -20°C long term. Avoid freeze/thaw cycles. |
| Stability: | 1 year |
| Predicted Protein Size: | 98kDa |
| Gene Name: | signal transducer and activator of transcription 3 |
| Database Link: | Entrez Gene 6774 Human P40763 |
| Background: | Swiss-Prot Acc.P40763.Signal transducer and transcription activator that mediates cellular responses to interleukins, KITLG/SCF and other growth factors. May mediate cellular responses to activated FGFR1, FGFR2, FGFR3 and FGFR4. Binds to the interleukin-6 (IL-6)-responsive elements identified in the promoters of various acute-phase protein genes. Activated by IL31 through IL31RA. |
| Synonyms: | APRF; FLJ20882; HIES; MGC16063 |



[View online »](#)

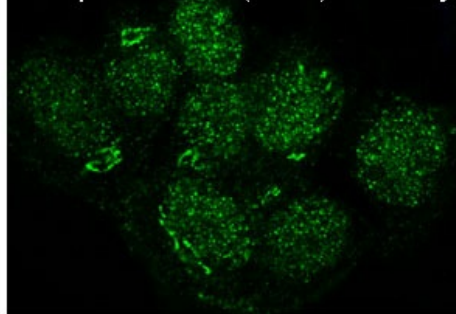
Product images:

Western blot analysis of Phospho-STAT3 (S727) in A431 lysates treated with EGF using Phospho-STAT3 (Ser727) antibody.

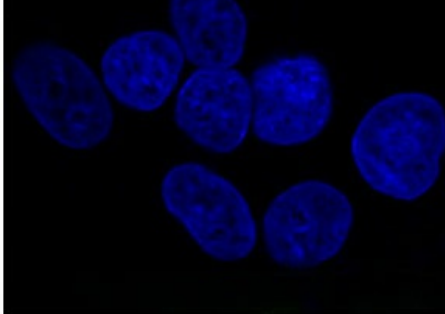


Immunohistochemistry analysis of paraffin-embedded rat brain using Phospho-STAT3 (S727) antibody. High-pressure and temperature Sodium Citrate pH 6.0 was used for antigen retrieval.

Phospho-STAT3 (S727) Antibody



DAPI



Immunofluorescence analysis of Phospho-STAT3 (Ser727) in A431 treated with EGF using Phospho-STAT3 (S727) antibody.