

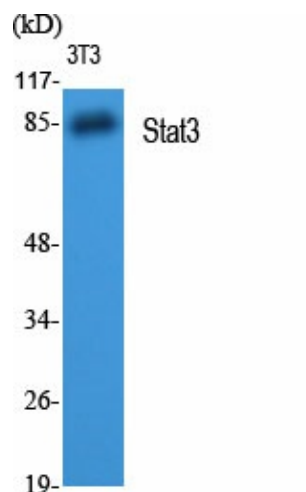
## Product datasheet for **TA385333M**

### STAT3 Rabbit Polyclonal Antibody

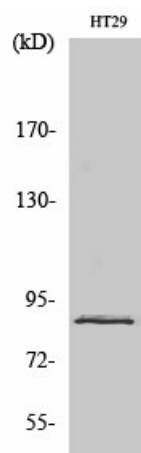
#### Product data:

Product Type:	Primary Antibodies
Applications:	ELISA, IF, IHC, WB
Recommended Dilution:	WB: 1/500-1/2000 IHC: 1/100-1/300 IF: 1/200-1/1000 ELISA: 1/10000
Reactivity:	Human, Mouse, Rat
Host:	Rabbit
Isotype:	IgG
Clonality:	Polyclonal
Immunogen:	The antiserum was produced against synthesized peptide derived from human STAT3. AA range:694-743
Formulation:	Liquid in PBS containing 50% glycerol, 0.5% BSA and 0.02% sodium azide, pH 7.3.
Concentration:	lot specific
Purification:	Affinity Purified
Conjugation:	Unconjugated
Storage:	Store at 4°C short term. Aliquot and store at -20°C long term. Avoid freeze/thaw cycles.
Stability:	1 year
Predicted Protein Size:	Observed MW (kDa):88
Gene Name:	signal transducer and activator of transcription 3
Database Link:	<a href="#">Entrez Gene 6774 Human P40763</a>
Background:	Swiss-Prot Acc.P40763.
Synonyms:	APRF; FLJ20882; HIES; MGC16063

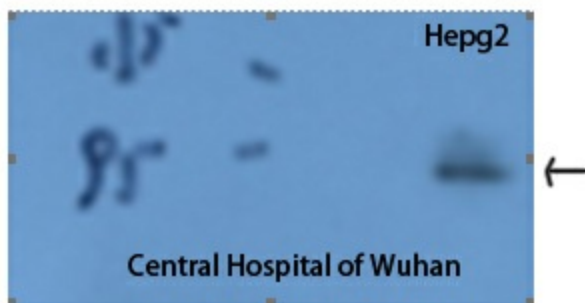
[View online »](#)

**Product images:**


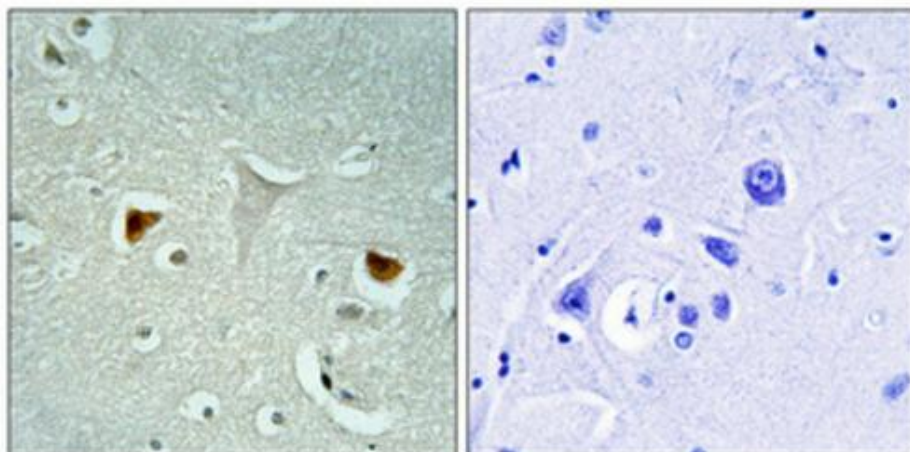
Western blot analysis of STAT3 in various lysates using STAT3 antibody.



Western blot analysis of STAT3 in NIH3T3 lysates using Stat3 antibody.



Western blot analysis of STAT3 in Hepg2 lysates using STAT3 antibody.



Immunohistochemistry analysis of paraffin-embedded Human brain using STAT3 antibody. High-pressure and temperature Tris-EDTA pH 8.0 was used for antigen retrieval. Negative control (right) obtained from antibody was preabsorbed by immunogen peptide.