

Product datasheet for **TA385331**

STAT1 Rabbit Monoclonal Antibody [Clone ID: R07-7A3]

Product data:

| | |
|-------------------------|--|
| Product Type: | Primary Antibodies |
| Clone Name: | R07-7A3 |
| Applications: | IF, IP, WB |
| Recommended Dilution: | WB: 1/2000-1/10000 ICC/IF: 1/500-1/1000 IP: 1/20 |
| Reactivity: | Human |
| Host: | Rabbit |
| Isotype: | IgG |
| Clonality: | Monoclonal |
| Immunogen: | A synthetic peptide of human STAT1 |
| Formulation: | 50mM Tris-Glycine(pH 7.4), 0.15M NaCl, 40% Glycerol, 0.01% Sodium azide and 0.05% BSA |
| Concentration: | lot specific |
| Purification: | Affinity Purified |
| Conjugation: | Unconjugated |
| Storage: | Store at 4°C short term. Aliquot and store at -20°C long term. Avoid freeze/thaw cycles. |
| Stability: | 1 year |
| Predicted Protein Size: | Calculated MW: 87 kDa; Observed MW: 87 kDa |
| Gene Name: | signal transducer and activator of transcription 1 |
| Database Link: | Entrez Gene 6772 Human P42224 |



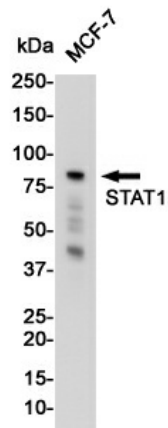
[View online »](#)

Background:

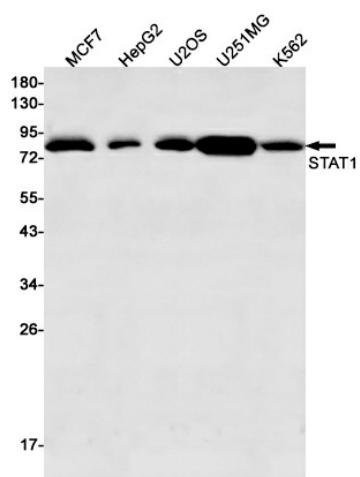
Swiss-Prot Acc.P42224. Signal transducer and transcription activator that mediates cellular responses to interferons (IFNs), cytokine KITLG/SCF and other cytokines and other growth factors. Following type I IFN (IFN-alpha and IFN-beta) binding to cell surface receptors, signaling via protein kinases leads to activation of Jak kinases (TYK2 and JAK1) and to tyrosine phosphorylation of STAT1 and STAT2. The phosphorylated STATs dimerize and associate with ISGF3G/IRF-9 to form a complex termed ISGF3 transcription factor, that enters the nucleus (PubMed:28753426). ISGF3 binds to the IFN stimulated response element (ISRE) to activate the transcription of IFN-stimulated genes (ISG), which drive the cell in an antiviral state. In response to type II IFN (IFN-gamma), STAT1 is tyrosine- and serine-phosphorylated (PubMed:26479788). It then forms a homodimer termed IFN-gamma-activated factor (GAF), migrates into the nucleus and binds to the IFN gamma activated sequence (GAS) to drive the expression of the target genes, inducing a cellular antiviral state. Becomes activated in response to KITLG/SCF and KIT signaling. May mediate cellular responses to activated FGFR1, FGFR2, FGFR3 and FGFR4.

Synonyms:

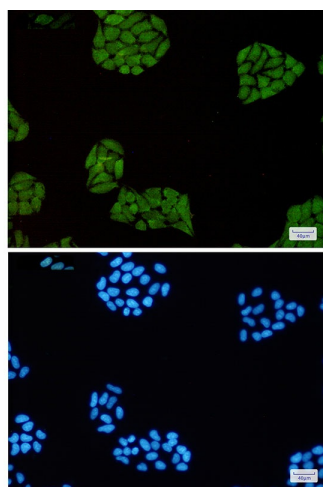
DKFZp686B04100; ISGF-3; OTTHUMP00000205845; STAT91

Product images:

Western blot analysis of STAT1 in MCF-7 lysates using STAT1 antibody.



Western blot analysis of STAT1 in MCF-7, HepG2, U2OS, U251MG, K562 lysates using STAT1 antibody.



Immunocytochemistry analysis of STAT1(green) in Hela using STAT1 antibody, and DAPI(blue)