

Product datasheet for **TA385329**

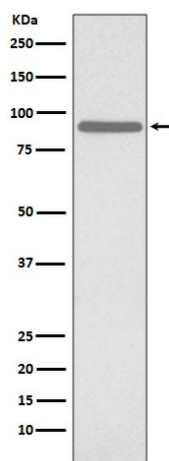
STAT1 Rabbit Polyclonal Antibody

Product data:

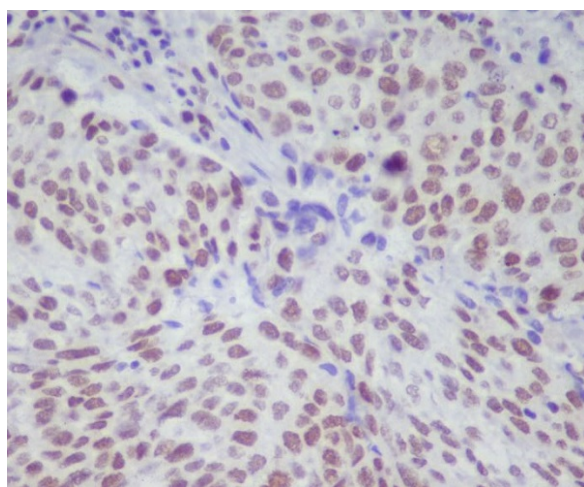
Product Type:	Primary Antibodies
Applications:	IHC, WB
Recommended Dilution:	WB: 1/1000-1/2000 IHC: 1/50-1/200
Reactivity:	Human, Mouse, Rat
Host:	Rabbit
Isotype:	IgG
Clonality:	Polyclonal
Immunogen:	A synthesized peptide derived from human Phospho-STAT1 (S727) (Phosphorylated)
Formulation:	Rabbit IgG in phosphate buffered saline , pH 7.4, 150mM NaCl, 0.02% sodium azide and 50% glycerol.
Concentration:	lot specific
Purification:	Affinity Chromatography
Conjugation:	Unconjugated
Storage:	Store at 4°C short term. Aliquot and store at -20°C long term. Avoid freeze/thaw cycles.
Stability:	1 year
Predicted Protein Size:	87kDa
Gene Name:	signal transducer and activator of transcription 1
Database Link:	Entrez Gene 6772 Human P42224
Background:	Swiss-Prot Acc.P42224.The protein encoded by this gene is a member of the STAT protein family. In response to cytokines and growth factors, STAT family members are phosphorylated by the receptor associated kinases, and then form homo- or heterodimers that translocate to the cell nucleus where they act as transcription activators.
Synonyms:	DKFZp686B04100; ISGF-3; OTTHUMP00000205845; STAT91



[View online »](#)

Product images:

Western blot analysis of Phospho-STAT1 (S727) in HeLa lysates treated with etoposide using Phospho-STAT1 (Ser727) antibody.



Immunohistochemistry analysis of paraffin-embedded Human lung cancer using Phospho-STAT1 (S727) antibody. High-pressure and temperature Sodium Citrate pH 6.0 was used for antigen retrieval.