

Product datasheet for **TA385328S**

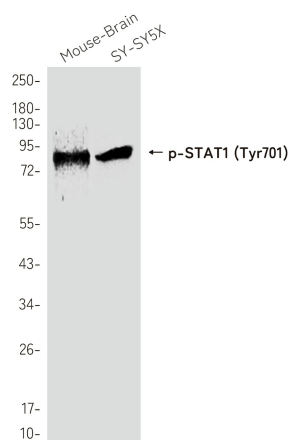
STAT1 Rabbit Polyclonal Antibody

Product data:

Product Type:	Primary Antibodies
Applications:	ELISA, IF, IHC, IP, WB
Recommended Dilution:	IF: 1/50-200 WB: 1/500-1/2000 IHC: 1/100-1/300 Immunoprecipitation: 2-5 ELISA: 1/10000
Reactivity:	Human, Mouse, Rat, Monkey
Host:	Rabbit
Isotype:	IgG
Clonality:	Polyclonal
Immunogen:	The antiserum was produced against synthesized peptide derived from human STAT1 around the phosphorylation site of Tyr701. AA range:668-717 (Phosphorylated)
Formulation:	Liquid in PBS containing 50% glycerol, 0.5% BSA and 0.02% sodium azide, pH 7.3.
Concentration:	lot specific
Purification:	Affinity Purified
Conjugation:	Unconjugated
Storage:	Store at 4°C short term. Aliquot and store at -20°C long term. Avoid freeze/thaw cycles.
Stability:	1 year
Predicted Protein Size:	Observed MW (kDa):87
Gene Name:	signal transducer and activator of transcription 1
Database Link:	Entrez Gene 6772 Human P42224
Background:	Swiss-Prot Acc.P42224.
Synonyms:	DKFZp686B04100; ISGF-3; OTTHUMP00000205845; STAT91



[View online »](#)

Product images:

Western blot analysis of Phospho-STAT1 (Tyr701) in various lysates using Phospho-STAT1 (Tyr701) antibody.