

## Product datasheet for **TA385326S**

### SA2 (STAG2) Rabbit Polyclonal Antibody

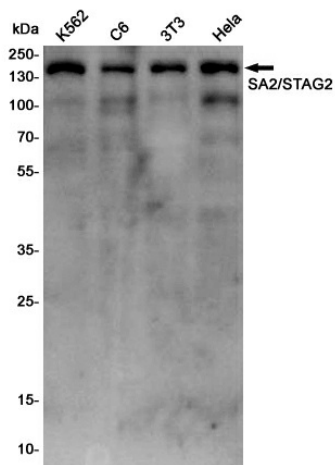
#### Product data:

Product Type:	Primary Antibodies
Applications:	FC, IF, IHC, WB
Recommended Dilution:	WB: 1/1000 IHC: 1/200 ICC/IF: 1/50 FC: 1/200
Reactivity:	Human, Mouse, Rat
Host:	Rabbit
Isotype:	IgG
Clonality:	Polyclonal
Immunogen:	Recombinant protein of human SA2
Formulation:	50mM Tris-Glycine(pH 7.4), 0.15M NaCl, 40% Glycerol, 0.01% Sodium azide and 0.05% BSA
Concentration:	lot specific
Purification:	Affinity Purified
Conjugation:	Unconjugated
Storage:	Store at 4°C short term. Aliquot and store at -20°C long term. Avoid freeze/thaw cycles.
Stability:	1 year
Predicted Protein Size:	Calculated MW: 141 kDa; Observed MW: 141 kDa
Gene Name:	stromal antigen 2
Database Link:	<a href="#">Entrez Gene 10735 Human Q8N3U4</a>
Background:	Swiss-Prot Acc.Q8N3U4.
Synonyms:	bA517O1.1; DKFZp686P168; DKFZp781H1753; FLJ25871; OTTHUMP00000081754; SA-2; SA2

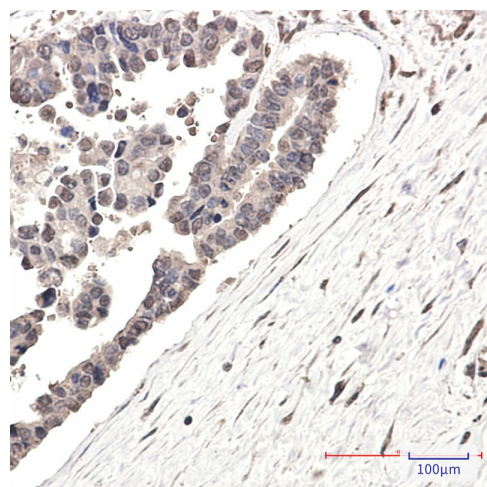


[View online »](#)

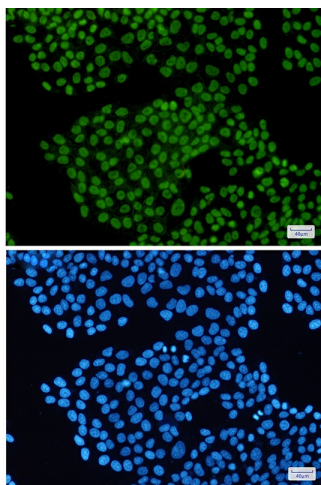
## Product images:



Western blot analysis of SA2/STAG2 in K562, C6, 3T3, HeLa lysates using SA2 antibody.



Immunohistochemistry analysis of paraffin-embedded Human Cholangiocarcinoma using SA2 antibody. High-pressure and temperature Sodium Citrate pH 6.0 was used for antigen retrieval.



Immunocytochemistry analysis of SA2(green) in HeLa using SA2 antibody, and DAPI(blue)