

Product datasheet for **TA385325**

SA2 (STAG2) Rabbit Polyclonal Antibody

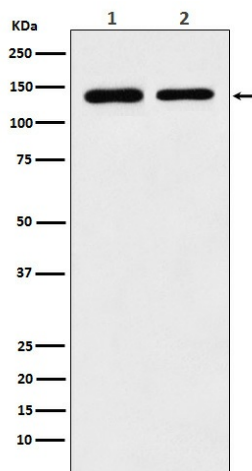
Product data:

Product Type:	Primary Antibodies
Applications:	FC, IF, IHC, WB
Recommended Dilution:	WB: 1/500-1/1000 IHC: 1/100-1/500 ICC/IF: 1/50-1/200 FC: 1/200
Reactivity:	Human, Mouse, Rat
Host:	Rabbit
Isotype:	IgG
Clonality:	Polyclonal
Immunogen:	A synthesized peptide derived from human SA2
Formulation:	Rabbit IgG in phosphate buffered saline , pH 7.4, 150mM NaCl, 0.02% sodium azide and 50% glycerol.
Concentration:	lot specific
Purification:	Affinity Chromatography
Conjugation:	Unconjugated
Storage:	Store at 4°C short term. Aliquot and store at -20°C long term. Avoid freeze/thaw cycles.
Stability:	1 year
Predicted Protein Size:	141kDa
Gene Name:	stromal antigen 2
Database Link:	Entrez Gene 10735 Human Q8N3U4
Background:	Swiss-Prot Acc.Q8N3U4.Component of cohesin complex, a complex required for the cohesion of sister chromatids after DNA replication. The cohesin complex apparently forms a large proteinaceous ring within which sister chromatids can be trapped. At anaphase, the complex is cleaved and dissociates from chromatin, allowing sister chromatids to segregate.
Synonyms:	bA517O1.1; DKFZp686P168; DKFZp781H1753; FLJ25871; OTTHUMP00000081754; SA-2; SA2



[View online »](#)

Product images:



Western blot analysis of SA2 in (1) K562 lysates;
(2) Raw264.7 lysates using SA2 antibody.