

## Product datasheet for **TA385322**

### SC35 (SRSF2) Rabbit Monoclonal Antibody [Clone ID: R04-7J2]

#### Product data:

Product Type:	Primary Antibodies
Clone Name:	R04-7J2
Applications:	IHC, IP, WB
Recommended Dilution:	WB: 1/1000 IHC: 1/200 IP: 1/20
Reactivity:	Human, Rat
Host:	Rabbit
Isotype:	IgG
Clonality:	Monoclonal
Immunogen:	A synthetic peptide of human SC35
Formulation:	50mM Tris-Glycine(pH 7.4), 0.15M NaCl, 40% Glycerol, 0.01% Sodium azide and 0.05% BSA
Concentration:	lot specific
Purification:	Affinity Purified
Conjugation:	Unconjugated
Storage:	Store at 4°C short term. Aliquot and store at -20°C long term. Avoid freeze/thaw cycles.
Stability:	1 year
Predicted Protein Size:	Calculated MW: 26 kDa; Observed MW: 35 kDa
Gene Name:	serine/arginine-rich splicing factor 2
Database Link:	<a href="#">Entrez Gene 6427 Human Q01130</a>



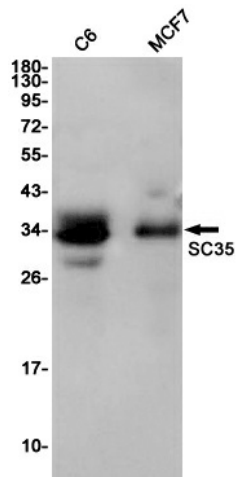
[View online »](#)

**Background:**

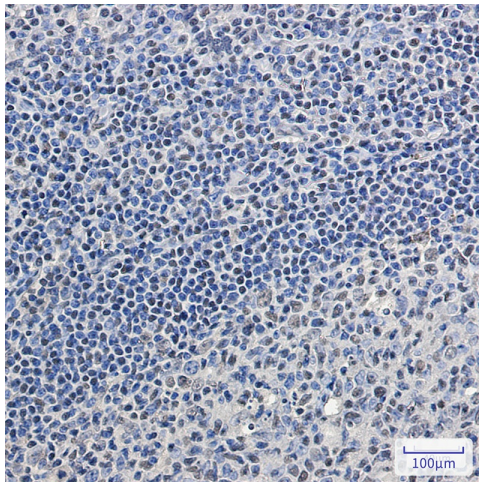
Swiss-Prot Acc.Q01130.Necessary for the splicing of pre-mRNA. It is required for formation of the earliest ATP-dependent splicing complex and interacts with spliceosomal components bound to both the 5'- and 3'-splice sites during spliceosome assembly. It also is required for ATP-dependent interactions of both U1 and U2 snRNPs with pre-mRNA. Interacts with other spliceosomal components, via the RS domains, to form a bridge between the 5'- and 3'-splice site binding components, U1 snRNP and U2AF. Binds to purine-rich RNA sequences, either 5'-AGSAGAGTA-3' (S=C or G) or 5'-GTTCGAGTA-3'. Can bind to beta-globin mRNA and commit it to the splicing pathway. The phosphorylated form (by SRPK2) is required for cellular apoptosis in response to cisplatin treatment.

**Synonyms:**

D11Wsu175e; MRF-1; Pr264; SC35; Sfrs2; Sfrs10

**Product images:**

Western blot analysis of SC35 in C6, MCF-7 lysates using SC35 antibody.



Immunohistochemistry analysis of paraffin-embedded Human tonsil using SC35 antibody.High-pressure and temperature Sodium Citrate pH 6.0 was used for antigen retrieval.