

## Product datasheet for **TA385321M**

### **SF2 (SRSF1) Rabbit Monoclonal Antibody [Clone ID: R07-9G7]**

#### **Product data:**

Product Type:	Primary Antibodies
Clone Name:	R07-9G7
Applications:	IF, IHC, WB
Recommended Dilution:	WB: 1/2000 IHC: 1/50 ICC/IF: 1/20-1/100
Reactivity:	Human, Mouse, Rat
Host:	Rabbit
Isotype:	IgG
Clonality:	Monoclonal
Immunogen:	A synthetic peptide of human SF2
Formulation:	50mM Tris-Glycine(pH 7.4), 0.15M NaCl, 40% Glycerol, 0.01% Sodium azide and 0.05% BSA
Concentration:	lot specific
Purification:	Affinity Purified
Conjugation:	Unconjugated
Storage:	Store at 4°C short term. Aliquot and store at -20°C long term. Avoid freeze/thaw cycles.
Stability:	1 year
Predicted Protein Size:	Calculated MW: 28 kDa; Observed MW: 28 kDa
Gene Name:	serine/arginine-rich splicing factor 1
Database Link:	<a href="#">Entrez Gene 6426 Human Q07955</a>



[View online »](#)

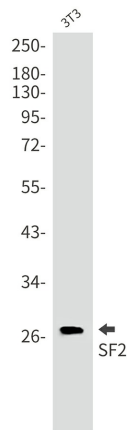
**Background:**

Swiss-Prot Acc.Q07955.Plays a role in preventing exon skipping, ensuring the accuracy of splicing and regulating alternative splicing. Interacts with other spliceosomal components, via the RS domains, to form a bridge between the 5'- and 3'-splice site binding components, U1 snRNP and U2AF. Can stimulate binding of U1 snRNP to a 5'-splice site-containing pre-mRNA. Binds to purine-rich RNA sequences, either the octamer, 5'-RGAAGAAC-3' (r=A or G) or the decamers, AGGACAGAGC/AGGACGAAGC. Binds preferentially to the 5'-CGAGGCG-3' motif in vitro. Three copies of the octamer constitute a powerful splicing enhancer in vitro, the ASF/SF2 splicing enhancer (ASE) which can specifically activate ASE-dependent splicing. Isoform ASF-2 and isoform ASF-3 act as splicing repressors. May function as export adapter involved in mRNA nuclear export through the TAP/NXF1 pathway.

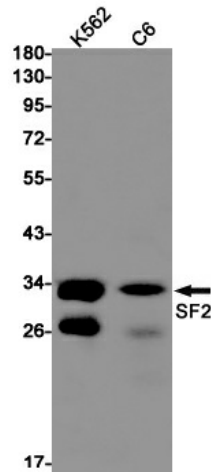
**Synonyms:**

1110054N12Rik; 5730507C05Rik; 6330415C05Rik; AI482334; Asf; AW491331; Sf2; Sfrs1

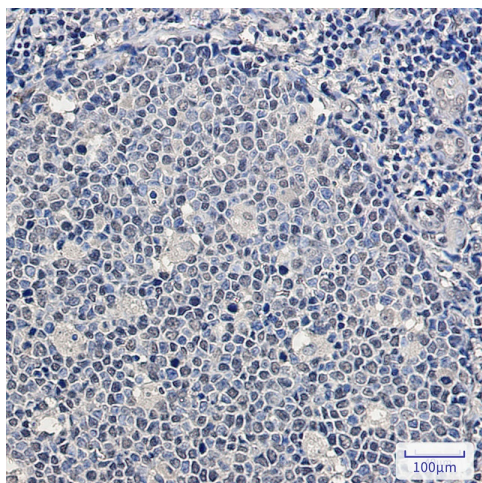
**Product images:**



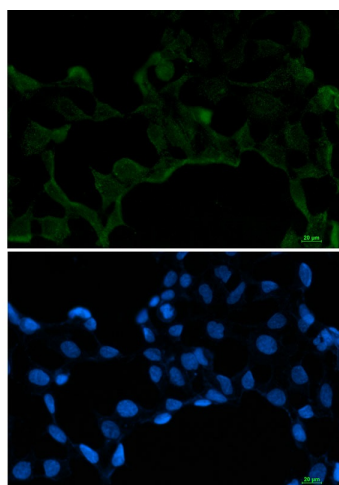
Western blot analysis of SF2 in 3T3 lysates using SF2 antibody.



Western blot analysis of SF2 in K562, C6 lysates using SF2 antibody



Immunohistochemistry analysis of paraffin-embedded Human tonsil using SF2 antibody. High-pressure and temperature Sodium Citrate pH 6.0 was used for antigen retrieval.



Immunocytochemistry analysis of SF2 (green) in 293T using SF2 antibody, and DAPI (blue).