

Product datasheet for **TA385320**

SF2 (SRSF1) Rabbit Polyclonal Antibody

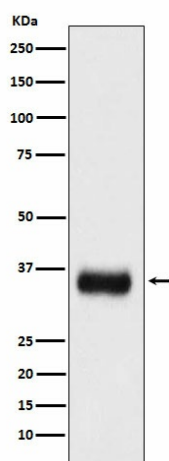
Product data:

Product Type:	Primary Antibodies
Applications:	FC, IF, IHC, WB
Recommended Dilution:	WB: 1/500-1/2000 IHC: 1/100-1/500 ICC/IF: 1/50-1/200 FC: 1/50
Reactivity:	Human, Mouse, Rat
Host:	Rabbit
Isotype:	IgG
Clonality:	Polyclonal
Immunogen:	A synthesized peptide derived from human SF2
Formulation:	Rabbit IgG in phosphate buffered saline , pH 7.4, 150mM NaCl, 0.02% sodium azide and 50% glycerol.
Concentration:	lot specific
Purification:	Affinity Chromatography
Conjugation:	Unconjugated
Storage:	Store at 4°C short term. Aliquot and store at -20°C long term. Avoid freeze/thaw cycles.
Stability:	1 year
Predicted Protein Size:	33kDa
Gene Name:	serine/arginine-rich splicing factor 1
Database Link:	Entrez Gene 6426 Human Q07955
Background:	Swiss-Prot Acc.Q07955.Plays a role in preventing exon skipping, ensuring the accuracy of splicing and regulating alternative splicing. Interacts with other spliceosomal components, via the RS domains, to form a bridge between the 5'- and 3'-splice site binding components, U1 snRNP and U2AF.
Synonyms:	1110054N12Rik; 5730507C05Rik; 6330415C05Rik; AI482334; Asf; AW491331; Sf2; Sfrs1



[View online »](#)

Product images:



Western blot analysis of SF2 in mouse spleen lysates using SF2 antibody.