

## Product datasheet for **TA385317**

### SRC Rabbit Polyclonal Antibody

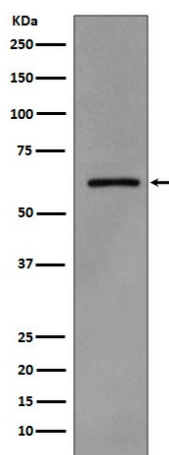
#### Product data:

Product Type:	Primary Antibodies
Applications:	FC, WB
Recommended Dilution:	WB: 1/500-1/2000 FC: 1/30
Reactivity:	Human, Mouse, Rat
Host:	Rabbit
Isotype:	IgG
Clonality:	Polyclonal
Immunogen:	A synthesized peptide derived from human Phospho-Src (Y419) (Phosphorylated)
Formulation:	Rabbit IgG in phosphate buffered saline , pH 7.4, 150mM NaCl, 0.02% sodium azide and 50% glycerol.
Concentration:	lot specific
Purification:	Affinity Chromatography
Conjugation:	Unconjugated
Storage:	Store at 4°C short term. Aliquot and store at -20°C long term. Avoid freeze/thaw cycles.
Stability:	1 year
Predicted Protein Size:	60kDa
Gene Name:	SRC proto-oncogene, non-receptor tyrosine kinase
Database Link:	<a href="#">Entrez Gene 6714 Human P12931</a>
Background:	Swiss-Prot Acc.P12931.Non-receptor protein tyrosine kinase which is activated following engagement of many different classes of cellular receptors including immune response receptors, integrins and other adhesion receptors, receptor protein tyrosine kinases, G protein-coupled receptors as well as cytokine receptors. Participates in signaling pathways that control a diverse spectrum of biological activities including gene transcription, immune response, cell adhesion, cell cycle progression, apoptosis, migration, and transformation.
Synonyms:	ASV; c-src; OTTHUMP00000174476; OTTHUMP00000174477; p60-Src; pp60c-src; SRC1



[View online »](#)

## Product images:



Western blot analysis of Phospho-Src (Y419) in A431 lysates treated with pervanadate using Phospho-Src (Tyr419) antibody.