

Product datasheet for **TA385316**

SRC Rabbit Polyclonal Antibody

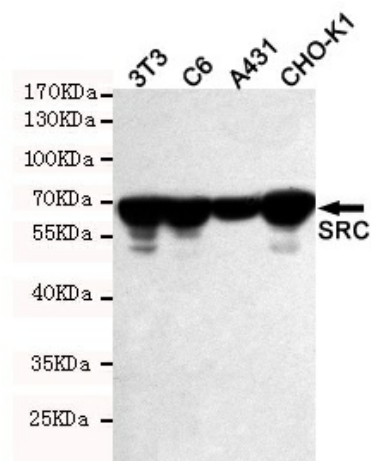
Product data:

Product Type:	Primary Antibodies
Applications:	IHC, WB
Recommended Dilution:	WB: 1/1000 IHC: 1/50
Reactivity:	Human, Mouse, Rat, Hamster
Host:	Rabbit
Isotype:	IgG
Clonality:	Polyclonal
Immunogen:	The antiserum was produced against synthesized non-phosphopeptide derived from human SRC around the phosphorylation site of Tyrosine 529.
Formulation:	Liquid in PBS containing 50% glycerol, 0.5% BSA and 0.02% sodium azide, pH 7.3.
Concentration:	lot specific
Purification:	Affinity Purified
Conjugation:	Unconjugated
Storage:	Store at 4°C short term. Aliquot and store at -20°C long term. Avoid freeze/thaw cycles.
Stability:	1 year
Predicted Protein Size:	60 kDa
Gene Name:	SRC proto-oncogene, non-receptor tyrosine kinase
Database Link:	Entrez Gene 6714 Human P12931
Background:	Swiss-Prot Acc.P12931.
Synonyms:	ASV; c-src; OTTHUMP00000174476; OTTHUMP00000174477; p60-Src; pp60c-src; SRC1

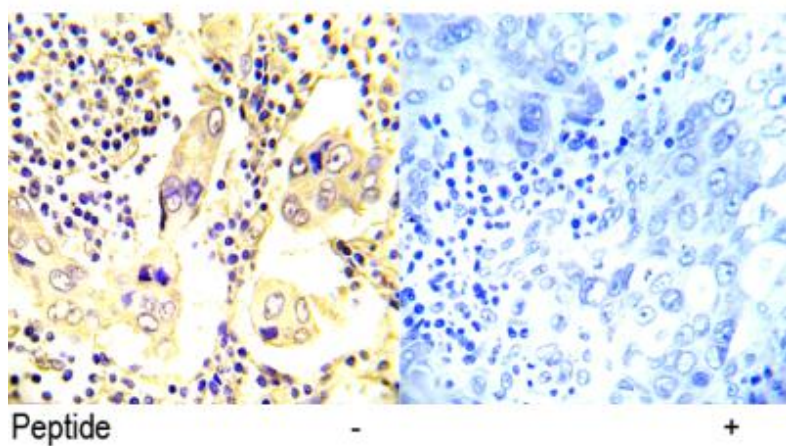


[View online »](#)

Product images:



Western blot detection of SRC in 3T3, C6, A431 and CHO-K1 cell lysates using SRC rabbit pAb (1:500 diluted). Predicted band size: 60kDa. Observed band size: 60kDa.



Immunohistochemical analysis of paraffin-embedded human breast carcinoma tissue using SRC (Ab-529) antibody.