

Product datasheet for **TA385313M**

SQSTM1 Rabbit Polyclonal Antibody

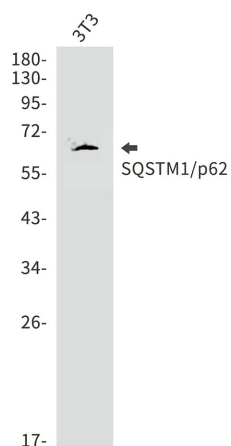
Product data:

Product Type:	Primary Antibodies
Applications:	FC, IF, WB
Recommended Dilution:	WB: 1/2000-1/10000 ICC/IF: 1/20-1/100 FC: 1/20
Reactivity:	Human, Mouse
Host:	Rabbit
Isotype:	IgG
Clonality:	Polyclonal
Immunogen:	A synthetic peptide of human SQSTM1/p62
Formulation:	50mM Tris-Glycine(pH 7.4), 0.15M NaCl, 40% Glycerol, 0.01% Sodium azide and 0.05% BSA
Concentration:	lot specific
Purification:	Affinity Purified
Conjugation:	Unconjugated
Storage:	Store at 4°C short term. Aliquot and store at -20°C long term. Avoid freeze/thaw cycles.
Stability:	1 year
Predicted Protein Size:	Calculated MW: 48 kDa; Observed MW: 62 kDa
Gene Name:	sequestosome 1
Database Link:	Entrez Gene 8878 Human Q13501
Background:	Swiss-Prot Acc.Q13501.
Synonyms:	A170; EBIAP; ORCA; OSIL; p60; p62; p62B; PDB3; ZIP3

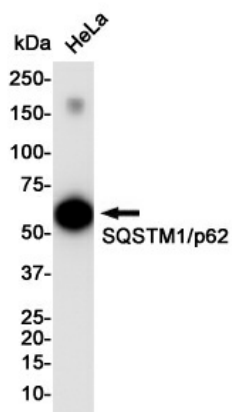


[View online »](#)

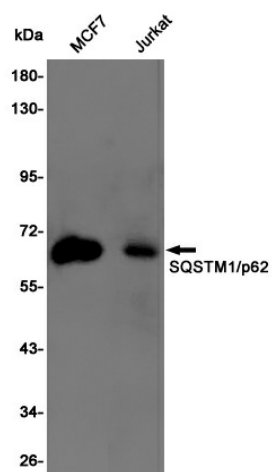
Product images:



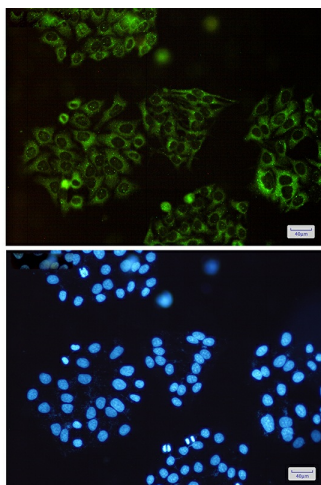
Western blot analysis of SQSTM1/p62 in 3T3 lysates using SQSTM1/p62 antibody.



Western blot analysis of SQSTM1/p62 in HeLa lysates using SQSTM1/p62 antibody.



Western blot analysis of SQSTM1/p62 in MCF-7, Jurkat lysates using SQSTM1/p62 antibody



Immunocytochemistry analysis of SQSTM1/p62(green) in HeLa using SQSTM1/p62 antibody, and DAPI(blue).