

Product datasheet for **TA385313**

SQSTM1 Rabbit Polyclonal Antibody

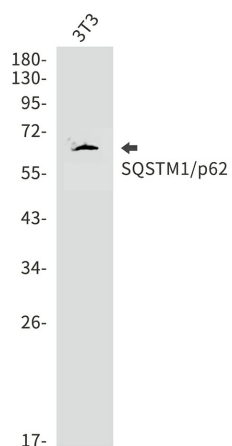
Product data:

| | |
|-------------------------|--|
| Product Type: | Primary Antibodies |
| Applications: | FC, IF, WB |
| Recommended Dilution: | WB: 1/2000-1/10000 ICC/IF: 1/20-1/100 FC: 1/20 |
| Reactivity: | Human, Mouse |
| Host: | Rabbit |
| Isotype: | IgG |
| Clonality: | Polyclonal |
| Immunogen: | A synthetic peptide of human SQSTM1/p62 |
| Formulation: | 50mM Tris-Glycine(pH 7.4), 0.15M NaCl, 40% Glycerol, 0.01% Sodium azide and 0.05% BSA |
| Concentration: | lot specific |
| Purification: | Affinity Purified |
| Conjugation: | Unconjugated |
| Storage: | Store at 4°C short term. Aliquot and store at -20°C long term. Avoid freeze/thaw cycles. |
| Stability: | 1 year |
| Predicted Protein Size: | Calculated MW: 48 kDa; Observed MW: 62 kDa |
| Gene Name: | sequestosome 1 |
| Database Link: | Entrez Gene 8878 Human Q13501 |
| Background: | Swiss-Prot Acc.Q13501. |
| Synonyms: | A170; EBIAP; ORCA; OSIL; p60; p62; p62B; PDB3; ZIP3 |

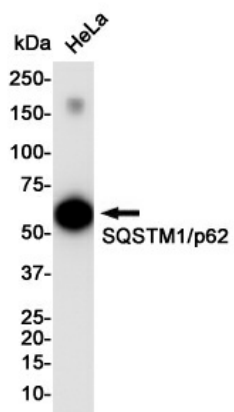


[View online »](#)

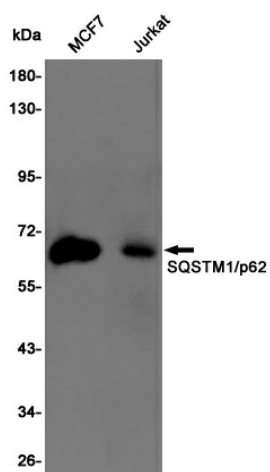
Product images:



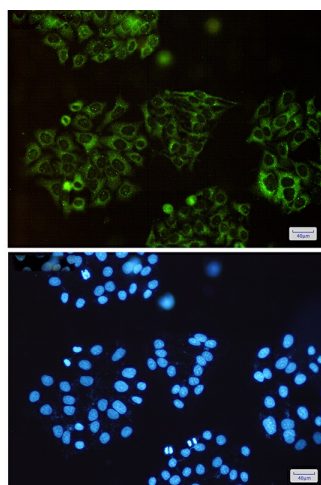
Western blot analysis of SQSTM1/p62 in 3T3 lysates using SQSTM1/p62 antibody.



Western blot analysis of SQSTM1/p62 in HeLa lysates using SQSTM1/p62 antibody.



Western blot analysis of SQSTM1/p62 in MCF-7, Jurkat lysates using SQSTM1/p62 antibody



Immunocytochemistry analysis of SQSTM1/p62(green) in HeLa using SQSTM1/p62 antibody, and DAPI(blue).