

Product datasheet for **TA385312S**

SQSTM1 Rabbit Polyclonal Antibody

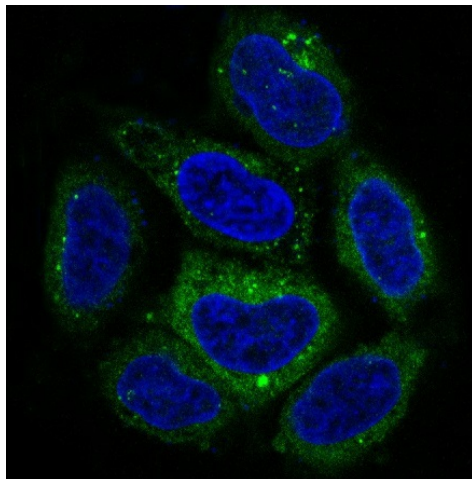
Product data:

Product Type:	Primary Antibodies
Applications:	FC, IF, WB
Recommended Dilution:	WB: 1/1000 ICC/IF: 1/50-1/200 FC: 1/50
Reactivity:	Human, Mouse, Rat
Host:	Rabbit
Isotype:	IgG
Clonality:	Polyclonal
Immunogen:	A synthesized peptide derived from human p62/SQSTM1
Formulation:	Rabbit IgG in phosphate buffered saline , pH 7.4, 150mM NaCl, 0.02% sodium azide and 50% glycerol.
Concentration:	lot specific
Purification:	Affinity Chromatography
Conjugation:	Unconjugated
Storage:	Store at 4°C short term. Aliquot and store at -20°C long term. Avoid freeze/thaw cycles.
Stability:	1 year
Predicted Protein Size:	62kDa
Gene Name:	sequestosome 1
Database Link:	Entrez Gene 8878 Human Q13501
Background:	Swiss-Prot Acc.Q13501.Autophagy receptor that interacts directly with both the cargo to become degraded and an autophagy modifier of the MAP1 LC3 family. Required both for the formation and autophagic degradation of polyubiquitin-containing bodies, called ALIS (aggresome-like induced structures) and links ALIS to the autophagic machinery. Involved in midbody ring degradation. May regulate the activation of NFKB1 by TNF-alpha, nerve growth factor (NGF) and interleukin-1.
Synonyms:	A170; EBIAP; ORCA; OSIL; p60; p62; p62B; PDB3; ZIP3

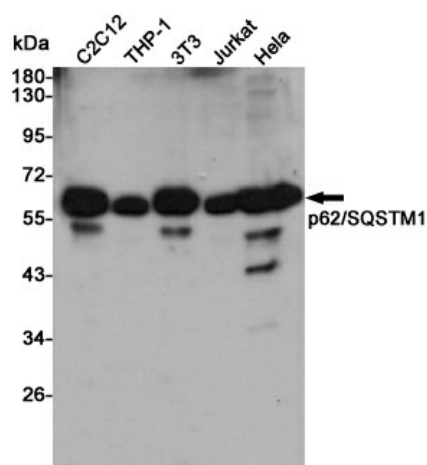


[View online »](#)

Product images:



Immunofluorescent analysis of HeLa cells, using p62/SQSTM1 Antibody.



Western blot analysis of p62/SQSTM1 in C2C12, THP-1, 3T3, Jurkat and HeLa lysates using SQSTM1/p62 antibody.