

## Product datasheet for **TA385310M**

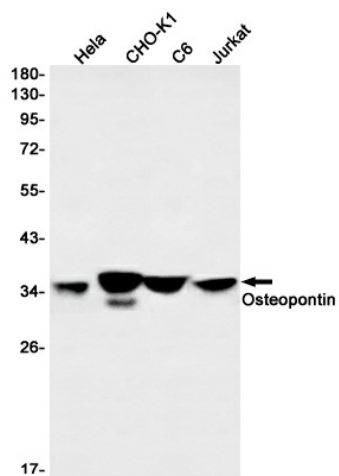
### Osteopontin (SPP1) Rabbit Monoclonal Antibody [Clone ID: R08-1C5]

#### Product data:

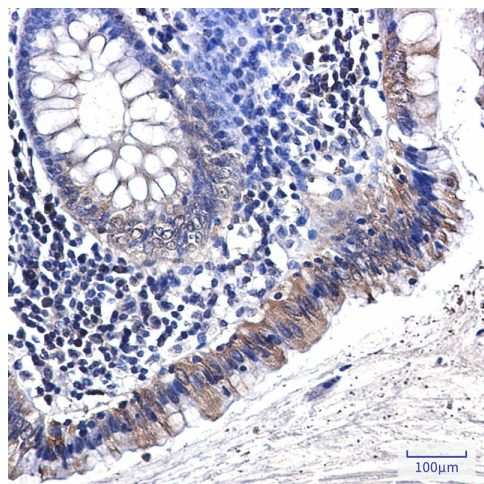
Product Type:	Primary Antibodies
Clone Name:	R08-1C5
Applications:	IHC, WB
Recommended Dilution:	WB: 1/1000 IHC: 1/50
Reactivity:	Human, Hamster, Rat
Host:	Rabbit
Isotype:	IgG
Clonality:	Monoclonal
Immunogen:	A synthetic peptide of human Osteopontin
Formulation:	50mM Tris-Glycine(pH 7.4), 0.15M NaCl, 40% Glycerol, 0.01% Sodium azide and 0.05% BSA
Concentration:	lot specific
Purification:	Affinity Purified
Conjugation:	Unconjugated
Storage:	Store at 4°C short term. Aliquot and store at -20°C long term. Avoid freeze/thaw cycles.
Stability:	1 year
Predicted Protein Size:	Calculated MW:35 kDa,Observed MW:35-100 kDa
Gene Name:	secreted phosphoprotein 1
Database Link:	<a href="#">Entrez Gene 6696 Human P10451</a>
Synonyms:	BNSP; BSPI; ETA-1; MGC110940; Nephropontin; OPN; osteopontin; SPP-1; Uropontin


[View online »](#)

## Product images:



Western blot analysis of Osteopontin in HeLa, CHO-K1, C6, Jurkat lysates using Osteopontin antibody.



Immunohistochemistry analysis of paraffin-embedded Human colon cancer using Osteopontin antibody. High-pressure and temperature Sodium Citrate pH 6.0 was used for antigen retrieval.