

Product datasheet for **TA385309M**

Osteopontin (SPP1) Rabbit Polyclonal Antibody

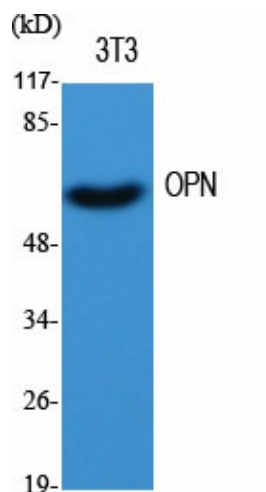
Product data:

Product Type:	Primary Antibodies
Applications:	ELISA, IHC, WB
Recommended Dilution:	WB: 1/500-1/2000 IHC: 1/100-1/300 ELISA: 1/20000
Reactivity:	Human, Mouse, Rat
Host:	Rabbit
Isotype:	IgG
Clonality:	Polyclonal
Immunogen:	The antiserum was produced against synthesized peptide derived from human Osteopontin. AA range:261-310
Formulation:	Liquid in PBS containing 50% glycerol, 0.5% BSA and 0.02% sodium azide, pH 7.3.
Concentration:	lot specific
Purification:	Affinity Purified
Conjugation:	Unconjugated
Storage:	Store at 4°C short term. Aliquot and store at -20°C long term. Avoid freeze/thaw cycles.
Stability:	1 year
Predicted Protein Size:	Observed MW (kDa):60
Gene Name:	secreted phosphoprotein 1
Database Link:	Entrez Gene 6696 Human P10451
Background:	Swiss-Prot Acc.P10451.
Synonyms:	BNSP; BSPI; ETA-1; MGC110940; Nephropontin; OPN; osteopontin; SPP-1; Uropontin



[View online »](#)

Product images:



Western blot analysis of Osteopontin in various lysates using Osteopontin antibody.