

## Product datasheet for **TA385308S**

### SPON2 Rabbit Monoclonal Antibody [Clone ID: R06-4H7]

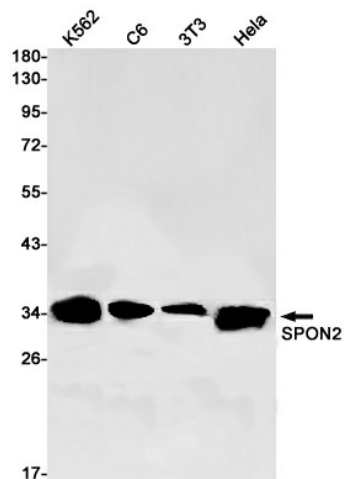
#### Product data:

Product Type:	Primary Antibodies
Clone Name:	R06-4H7
Applications:	WB
Recommended Dilution:	WB: 1/1000-1/100
Reactivity:	Human, Mouse, Rat
Host:	Rabbit
Isotype:	IgG
Clonality:	Monoclonal
Immunogen:	A synthetic peptide of human SPON2
Formulation:	50mM Tris-Glycine(pH 7.4), 0.15M NaCl, 40% Glycerol, 0.01% Sodium azide and 0.05% BSA
Concentration:	lot specific
Purification:	Affinity Purified
Conjugation:	Unconjugated
Storage:	Store at 4°C short term. Aliquot and store at -20°C long term. Avoid freeze/thaw cycles.
Stability:	1 year
Predicted Protein Size:	Calculated MW: 36 kDa; Observed MW: 36 kDa
Gene Name:	spondin 2
Database Link:	<a href="#">Entrez Gene 10417 Human Q9BUD6</a>
Background:	Swiss-Prot Acc.Q9BUD6.Spondin-2
Synonyms:	DIL-1; DIL1; DKFZp686G21139; FLJ16313; FLJ34460; M-spondin; Mindin



[View online »](#)

## Product images:



Western blot analysis of SPON2 in K562, C6, 3T3, HeLa lysates using SPON2 antibody.