

## Product datasheet for **TA385305**

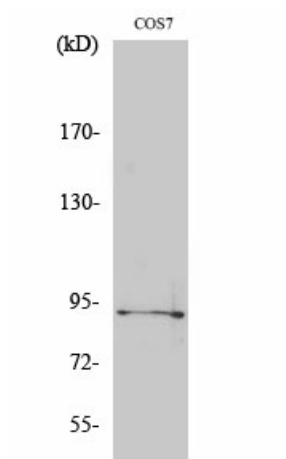
### SP1 Rabbit Polyclonal Antibody

#### Product data:

Product Type:	Primary Antibodies
Applications:	ELISA, IHC, WB
Recommended Dilution:	WB: 1/1000 IHC: 1/50
Reactivity:	Human, Mouse, Rat, Monkey
Host:	Rabbit
Isotype:	IgG
Clonality:	Polyclonal
Immunogen:	Synthesized peptide derived from human Sp1 around the phosphorylation site of T739. (Phosphorylated)
Formulation:	Liquid in PBS containing 50% glycerol, 0.5% BSA and 0.02% sodium azide, pH 7.3.
Concentration:	lot specific
Purification:	Affinity Purified
Conjugation:	Unconjugated
Storage:	Store at 4°C short term. Aliquot and store at -20°C long term. Avoid freeze/thaw cycles.
Stability:	1 year
Predicted Protein Size:	81 kDa
Gene Name:	Sp1 transcription factor
Database Link:	<a href="#">Entrez Gene 6667 Human P08047</a>
Synonyms:	TSFP1



[View online »](#)

**Product images:**

Western blot analysis of Phospho-Sp1 (Thr739) in COS7 lysates using Phospho-Sp1 (Thr739) antibody.