

Product datasheet for **TA385304M**

SOX9 Rabbit Monoclonal Antibody [Clone ID: R06-7F6]

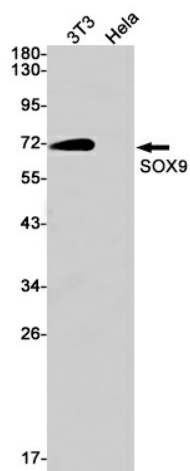
Product data:

Product Type:	Primary Antibodies
Clone Name:	R06-7F6
Applications:	IHC, IP, WB
Recommended Dilution:	WB: 1/2000 IHC: 1/200 IP: 1/20
Reactivity:	Human, Mouse
Host:	Rabbit
Isotype:	IgG
Clonality:	Monoclonal
Immunogen:	Recombinant protein of human SOX9
Formulation:	50mM Tris-Glycine(pH 7.4), 0.15M NaCl, 40% Glycerol, 0.01% Sodium azide and 0.05% BSA
Concentration:	lot specific
Purification:	Affinity Purified
Conjugation:	Unconjugated
Storage:	Store at 4°C short term. Aliquot and store at -20°C long term. Avoid freeze/thaw cycles.
Stability:	1 year
Predicted Protein Size:	Calculated MW: 56 kDa; Observed MW: 70 kDa
Gene Name:	SRY-box 9
Database Link:	Entrez Gene 6662 Human P48436
Background:	Swiss-Prot Acc.P48436.
Synonyms:	CMD1; CMPD1; SRA1

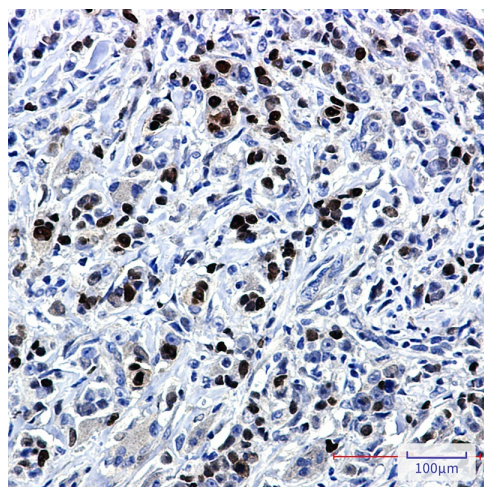


[View online »](#)

Product images:



Western blot analysis of SOX9 in 3T3, HeLa lysates using SOX9 antibody.



Immunohistochemistry analysis of paraffin-embedded Human breast cancer using SOX9 antibody. High-pressure and temperature Sodium Citrate pH 6.0 was used for antigen retrieval.