

## Product datasheet for **TA385302**

### SOD2 Rabbit Polyclonal Antibody

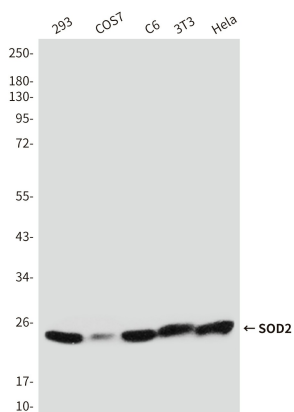
#### Product data:

Product Type:	Primary Antibodies
Applications:	WB
Recommended Dilution:	WB: 1/1000
Reactivity:	Human, Mouse, Rat, Monkey
Host:	Rabbit
Isotype:	IgG
Clonality:	Polyclonal
Immunogen:	Synthetic peptide.
Formulation:	Liquid in PBS containing 50% glycerol, 0.5% BSA and 0.03% Proclin 300, pH 7.3.
Concentration:	lot specific
Purification:	Affinity Purified
Conjugation:	Unconjugated
Storage:	Store at 4°C short term. Aliquot and store at -20°C long term. Avoid freeze/thaw cycles.
Stability:	1 year
Predicted Protein Size:	25kDa
Gene Name:	superoxide dismutase 2, mitochondrial
Database Link:	<a href="#">Entrez Gene 6648 Human P04179</a>
Background:	Swiss-Prot Acc.P04179.Destroys superoxide anion radicals which are normally produced within the cells and which are toxic to biological systems.
Synonyms:	IPO-B; Mn-SOD; MNSOD; MVCD6

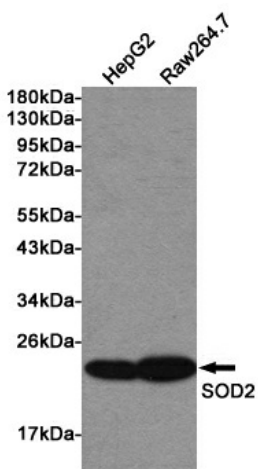


[View online »](#)

Product images:



Western blot analysis of SOD2 in 293, COS7, C6, 3T3 and HeLa lysates using SOD2 antibody.



Western blot detection of SOD2 in HepG2 and Raw264.7 lysates using SOD2 Rabbit pAb (1:1000 diluted). Predicted band size: 25KDa. Observed band size:22KDa.