

## Product datasheet for **TA385301S**

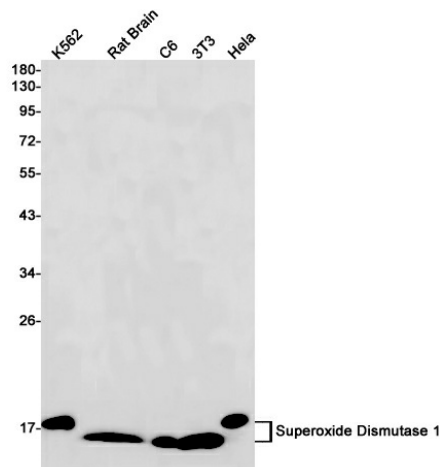
### Superoxide Dismutase 1 (SOD1) Rabbit Monoclonal Antibody [Clone ID: R07-1G6]

#### Product data:

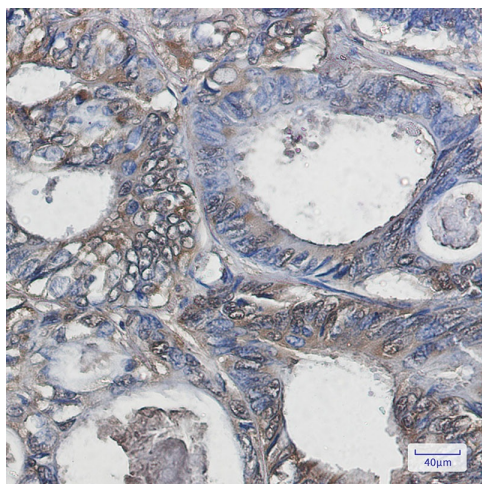
Product Type:	Primary Antibodies
Clone Name:	R07-1G6
Applications:	IHC, WB
Recommended Dilution:	WB: 1/1000 IHC: 1/20
Reactivity:	Human, Mouse, Rat
Host:	Rabbit
Isotype:	IgG
Clonality:	Monoclonal
Immunogen:	A synthetic peptide of human Superoxide Dismutase 1
Formulation:	50mM Tris-Glycine(pH 7.4), 0.15M NaCl, 40% Glycerol, 0.01% Sodium azide and 0.05% BSA
Concentration:	lot specific
Purification:	Affinity Purified
Conjugation:	Unconjugated
Storage:	Store at 4°C short term. Aliquot and store at -20°C long term. Avoid freeze/thaw cycles.
Stability:	1 year
Predicted Protein Size:	Calculated MW: 16 kDa; Observed MW: 18 kDa
Gene Name:	superoxide dismutase 1, soluble
Database Link:	<a href="#">Entrez Gene 6647 Human P00441</a>
Background:	Swiss-Prot Acc.P00441.Destroys radicals which are normally produced within the cells and which are toxic to biological systems.MiscellaneousThe protein (both wild-type and ALS1 variants) has a tendency to form fibrillar aggregates in the absence of the intramolecular disulfide bond or of bound zinc ions. These aggregates may have cytotoxic effects. Zinc binding promotes dimerization and stabilizes the native form.
Synonyms:	ALS1; homodimer; IPOA; SOD



[View online »](#)

**Product images:**

Western blot analysis of Superoxide Dismutase 1 in K562, rat Brain, C6, 3T3, HeLa lysates using Superoxide Dismutase 1 antibody.



Immunohistochemistry analysis of paraffin-embedded Human colon cancer using Superoxide Dismutase 1 antibody. High-pressure and temperature Sodium Citrate pH 6.0 was used for antigen retrieval.