

Product datasheet for **TA385299**

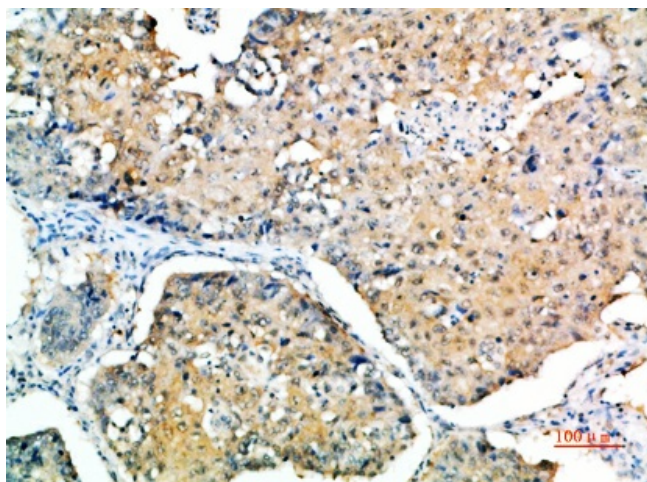
SOCS3 Rabbit Polyclonal Antibody

Product data:

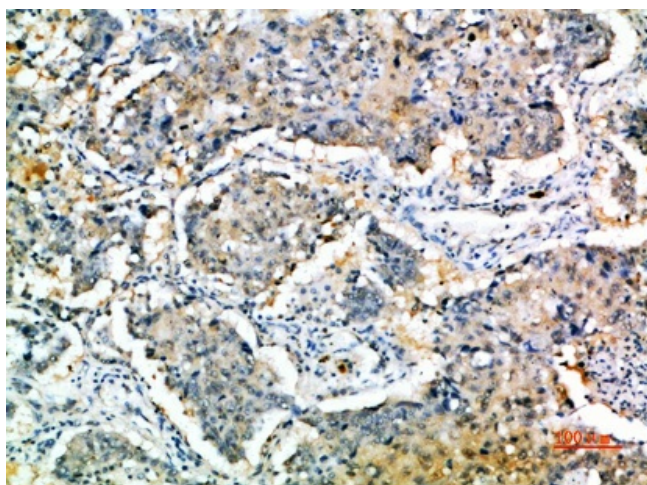
Product Type:	Primary Antibodies
Applications:	ELISA, IHC
Recommended Dilution:	IHC-p: 1/50-1/200
Reactivity:	Human, Mouse, Rat
Host:	Rabbit
Isotype:	IgG
Clonality:	Polyclonal
Immunogen:	Synthetic peptide from human protein at AA range: 20-70
Formulation:	Liquid in PBS containing 50% glycerol, 0.5% BSA and 0.02% sodium azide, pH 7.3.
Concentration:	lot specific
Purification:	Affinity Purified
Conjugation:	Unconjugated
Storage:	Store at 4°C short term. Aliquot and store at -20°C long term. Avoid freeze/thaw cycles.
Stability:	1 year
Database Link:	O14543
Background:	Swiss-Prot Acc.O14543.



[View online »](#)

Product images:

Immunohistochemistry analysis of paraffin-embedded Human lungcancer using SOCS3 antibody.High-pressure and temperature Sodium Citrate pH 6.0 was used for antigen retrieval.



Immunohistochemical analysis of paraffin-embedded Human tonsils using SOCS3 antibody.High-pressure and temperature Sodium Citrate pH 6.0 was used for antigen retrieval.