

## Product datasheet for **TA385298S**

### SOCS1 Rabbit Polyclonal Antibody

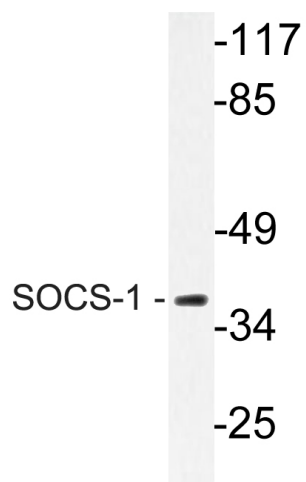
#### Product data:

Product Type:	Primary Antibodies
Applications:	ELISA, IF, IHC, WB
Recommended Dilution:	IF: 1/50-200 WB: 1/500-2000 IHC: 1/50-300
Reactivity:	Human, Mouse, Rat
Host:	Rabbit
Isotype:	IgG
Clonality:	Polyclonal
Immunogen:	The antiserum was produced against synthesized peptide derived from human SOCS-1. AA range:49-98
Formulation:	Liquid in PBS containing 50% glycerol, 0.5% BSA and 0.02% sodium azide, pH 7.3.
Concentration:	lot specific
Purification:	Affinity Purified
Conjugation:	Unconjugated
Storage:	Store at 4°C short term. Aliquot and store at -20°C long term. Avoid freeze/thaw cycles.
Stability:	1 year
Predicted Protein Size:	Predicted MW(kDa): 24□ Observed MW (kDa):38
Gene Name:	suppressor of cytokine signaling 1
Database Link:	<a href="#">Entrez Gene 8651 Human O15524</a>
Background:	Swiss-Prot Acc.O15524.
Synonyms:	CIS1; Cish1; JAB; SOCS-1; SSI-1; SSI1; TIP-3; TIP3



[View online »](#)

## Product images:



Western Blot analysis of Jurkat cell lysate using SOCS-1 Polyclonal Antibody