

## Product datasheet for **TA385296M**

### Syntrophin alpha 1 (SNTA1) Rabbit Monoclonal Antibody [Clone ID: R03-4E7]

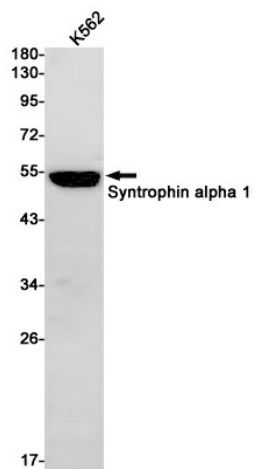
#### Product data:

Product Type:	Primary Antibodies
Clone Name:	R03-4E7
Applications:	IF, IHC, WB
Recommended Dilution:	WB: 1/1000-1/5000 IHC: 1/50 ICC/IF: 1/50
Reactivity:	Human
Host:	Rabbit
Isotype:	IgG
Clonality:	Monoclonal
Immunogen:	A synthetic peptide of human Syntrophin alpha 1
Formulation:	50mM Tris-Glycine(pH 7.4), 0.15M NaCl, 40% Glycerol, 0.01% Sodium azide and 0.05% BSA
Concentration:	lot specific
Purification:	Affinity Purified
Conjugation:	Unconjugated
Storage:	Store at 4°C short term. Aliquot and store at -20°C long term. Avoid freeze/thaw cycles.
Stability:	1 year
Predicted Protein Size:	Calculated MW: 54 kDa; Observed MW: 54 kDa
Gene Name:	syntrophin alpha 1
Database Link:	<a href="#">Entrez Gene 6640 Human Q13424</a>
Background:	Swiss-Prot Acc.Q13424.Adapter protein that binds to and probably organizes the subcellular localization of a variety of membrane proteins. May link various receptors to the actin cytoskeleton and the extracellular matrix via the dystrophin glycoprotein complex. Plays an important role in synapse formation and in the organization of UTRN and acetylcholine receptors at the neuromuscular synapse. Binds to phosphatidylinositol 4,5-bisphosphate .
Synonyms:	dj1187J4.5; LQT12; SNT1; Syntrophin-1; TACIP1

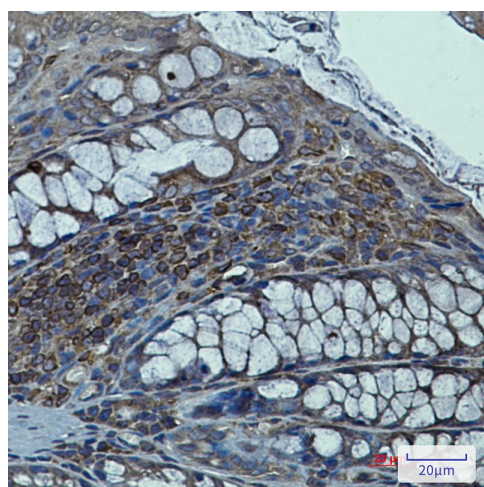


[View online »](#)

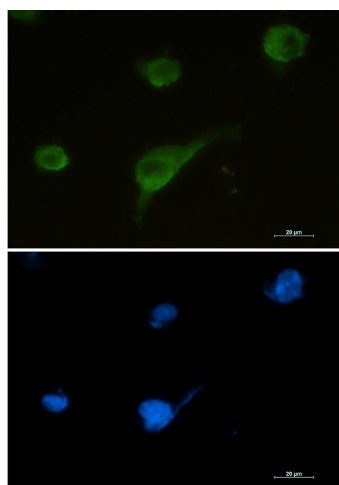
## Product images:



Western blot analysis of Syntrophin alpha 1 in K562 lysates using Syntrophin alpha 1 antibody



Immunohistochemistry analysis of paraffin-embedded mouse colon using Syntrophin alpha 1 antibody. High-pressure and temperature Sodium Citrate pH 6.0 was used for antigen retrieval.



Immunocytochemistry analysis of Syntrophin alpha 1 (green) in U87-MG using Syntrophin alpha 1 antibody, and DAPI (blue).