

Product datasheet for **TA385294S**

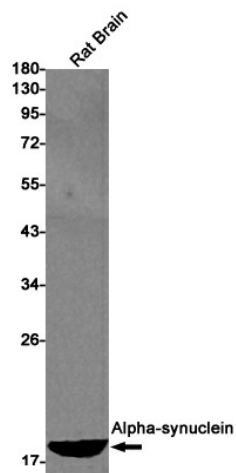
alpha Synuclein (SNCA) Rabbit Monoclonal Antibody [Clone ID: R01-4E1]

Product data:

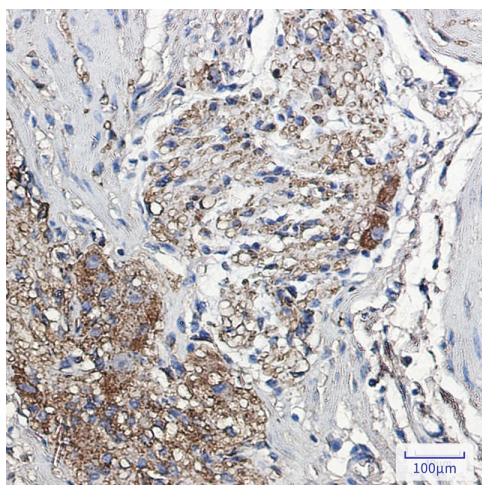
Product Type:	Primary Antibodies
Clone Name:	R01-4E1
Applications:	IHC, IP, WB
Recommended Dilution:	WB: 1/1000 IHC: 1/20-1/500 IP: 1/20
Reactivity:	Human, Rat
Host:	Rabbit
Isotype:	IgG
Clonality:	Monoclonal
Immunogen:	Recombinant protein of human Alpha-synuclein
Formulation:	50mM Tris-Glycine(pH 7.4), 0.15M NaCl, 40% Glycerol, 0.01% Sodium azide and 0.05% BSA
Concentration:	lot specific
Purification:	Affinity Purified
Conjugation:	Unconjugated
Storage:	Store at 4°C short term. Aliquot and store at -20°C long term. Avoid freeze/thaw cycles.
Stability:	1 year
Predicted Protein Size:	Calculated MW: 15 kDa; Observed MW: 18 kDa
Gene Name:	synuclein alpha
Database Link:	Entrez Gene 6622 Human P37840
Background:	Swiss-Prot Acc.P37840.May be involved in the regulation of dopamine release and transport. Induces fibrillization of microtubule-associated protein tau. Reduces neuronal responsiveness to various apoptotic stimuli, leading to a decreased caspase-3 activation.SitesFeature keyPosition(s)Description
Synonyms:	alpha-synuclein; MGC110988; NACP; OTTHUMP00000161559; OTTHUMP00000161561; PARK1; PARK4; PD1



[View online »](#)

Product images:

Western blot analysis of Alphasynuclein in rat Brain lysates using alpha Synuclein antibody.



Immunohistochemistry analysis of paraffin-embedded Human colon cancer using Alphasynuclein antibody. High-pressure and temperature Sodium Citrate pH 6.0 was used for antigen retrieval.