

## Product datasheet for **TA385293S**

### **SNAP29 Rabbit Monoclonal Antibody [Clone ID: R01-8C8]**

#### **Product data:**

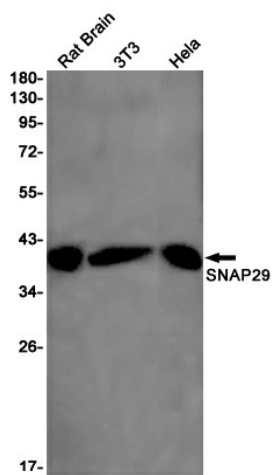
|                                |  |
|--------------------------------|--|
| <b>Product Type:</b>           | Primary Antibodies   |
| <b>Clone Name:</b>             | R01-8C8  |
| <b>Applications:</b>           | IF, IP, WB   |
| <b>Recommended Dilution:</b>   | WB: 1/1000-1/5000<br>ICC/IF: 1/20-1/100<br>IP: 1/20  |
| <b>Reactivity:</b>             | Human, Mouse, Rat  |
| <b>Host:</b>                   | Rabbit   |
| <b>Isotype:</b>                | IgG  |
| <b>Clonality:</b>              | Monoclonal   |
| <b>Immunogen:</b>              | A synthetic peptide of human SNAP29  |
| <b>Formulation:</b>            | 50mM Tris-Glycine(pH 7.4), 0.15M NaCl, 40% Glycerol, 0.01% Sodium azide and 0.05% BSA  |
| <b>Concentration:</b>          | lot specific   |
| <b>Purification:</b>           | Affinity Purified  |
| <b>Conjugation:</b>            | Unconjugated   |
| <b>Storage:</b>                | Store at 4°C short term. Aliquot and store at -20°C long term. Avoid freeze/thaw cycles.   |
| <b>Stability:</b>              | 1 year   |
| <b>Predicted Protein Size:</b> | Calculated MW: 29 kDa; Observed MW: 29 kDa   |
| <b>Gene Name:</b>              | synaptosome associated protein 29kDa   |
| <b>Database Link:</b>          | <a href="#">Entrez Gene 9342 Human O95721</a>  |
| <b>Background:</b>             | Swiss-Prot Acc.O95721.SNAREs, soluble N-ethylmaleimide-sensitive factor-attachment protein receptors, are essential proteins for fusion of cellular membranes. SNAREs localized on opposing membranes assemble to form a trans-SNARE complex, an extended, parallel four alpha-helical bundle that drives membrane fusion. SNAP29 is a SNARE involved in autophagy through the direct control of autophagosome membrane fusion with the lysosome membrane. Plays also a role in ciliogenesis by regulating membrane fusions. |



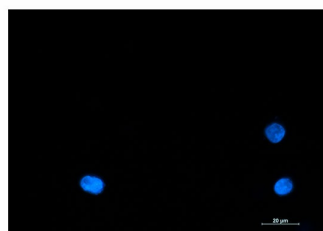
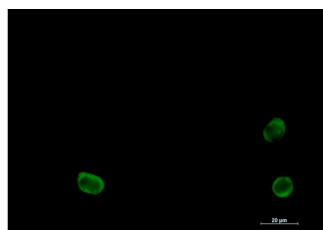
[View online »](#)

Synonyms: CEDNIK; FLJ21051; SNAP-29

**Product images:**



Western blot analysis of SNAP29 in rat Brain, 3T3, HeLa lysates using SNAP29 antibody.



Immunocytochemistry analysis of SNAP29 (green) in K562 using SNAP29 antibody, and DAPI (blue).