

## Product datasheet for **TA385293**

### **SNAP29 Rabbit Monoclonal Antibody [Clone ID: R01-8C8]**

#### **Product data:**

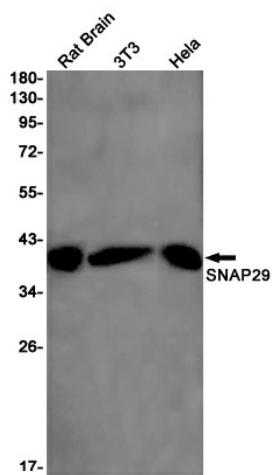
<b>Product Type:</b>	Primary Antibodies
<b>Clone Name:</b>	R01-8C8
<b>Applications:</b>	IF, IP, WB
<b>Recommended Dilution:</b>	WB: 1/1000-1/5000 ICC/IF: 1/20-1/100 IP: 1/20
<b>Reactivity:</b>	Human, Mouse, Rat
<b>Host:</b>	Rabbit
<b>Isotype:</b>	IgG
<b>Clonality:</b>	Monoclonal
<b>Immunogen:</b>	A synthetic peptide of human SNAP29
<b>Formulation:</b>	50mM Tris-Glycine(pH 7.4), 0.15M NaCl, 40% Glycerol, 0.01% Sodium azide and 0.05% BSA
<b>Concentration:</b>	lot specific
<b>Purification:</b>	Affinity Purified
<b>Conjugation:</b>	Unconjugated
<b>Storage:</b>	Store at 4°C short term. Aliquot and store at -20°C long term. Avoid freeze/thaw cycles.
<b>Stability:</b>	1 year
<b>Predicted Protein Size:</b>	Calculated MW: 29 kDa; Observed MW: 29 kDa
<b>Gene Name:</b>	synaptosome associated protein 29kDa
<b>Database Link:</b>	<a href="#">Entrez Gene 9342 Human O95721</a>
<b>Background:</b>	Swiss-Prot Acc.O95721.SNAREs, soluble N-ethylmaleimide-sensitive factor-attachment protein receptors, are essential proteins for fusion of cellular membranes. SNAREs localized on opposing membranes assemble to form a trans-SNARE complex, an extended, parallel four alpha-helical bundle that drives membrane fusion. SNAP29 is a SNARE involved in autophagy through the direct control of autophagosome membrane fusion with the lysosome membrane. Plays also a role in ciliogenesis by regulating membrane fusions.



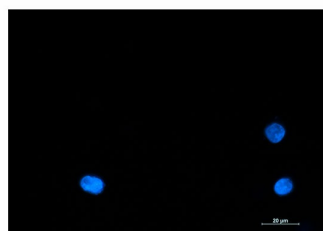
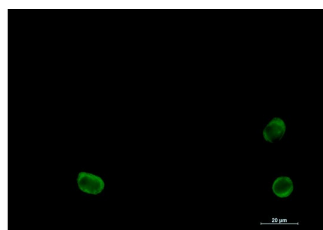
[View online »](#)

Synonyms: CEDNIK; FLJ21051; SNAP-29

**Product images:**



Western blot analysis of SNAP29 in rat Brain, 3T3, HeLa lysates using SNAP29 antibody.



Immunocytochemistry analysis of SNAP29 (green) in K562 using SNAP29 antibody, and DAPI (blue).