

## Product datasheet for **TA385292**

### SNAP25 Rabbit Polyclonal Antibody

#### Product data:

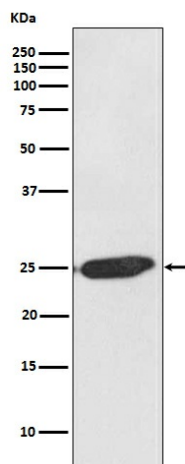
Product Type:	Primary Antibodies
Applications:	IF, IP, WB
Recommended Dilution:	WB: 1/500-1/2000 ICC/IF: 1/50-1/200 IP: 1/50
Reactivity:	Human, Mouse, Rat
Host:	Rabbit
Isotype:	IgG
Clonality:	Polyclonal
Immunogen:	A synthesized peptide derived from human SNAP25
Formulation:	Rabbit IgG in phosphate buffered saline , pH 7.4, 150mM NaCl, 0.02% sodium azide and 50% glycerol.
Concentration:	lot specific
Purification:	Affinity Chromatography
Conjugation:	Unconjugated
Storage:	Store at 4°C short term. Aliquot and store at -20°C long term. Avoid freeze/thaw cycles.
Stability:	1 year
Predicted Protein Size:	25kDa
Gene Name:	synaptosome associated protein 25kDa
Database Link:	<a href="#">Entrez Gene 6616 Human P60880</a>
Background:	Swiss-Prot Acc.P60880.SNAP25 forms a core complex with the SNARE proteins syntaxin and synaptobrevin to mediate synaptic vesicle fusion with the plasma membrane during Ca <sup>2+</sup> -dependent exocytosis. This complex is responsible for exocytosis of the neurotransmitter γ-aminobutyric acid (GABA). Neurotransmitter release is inhibited by proteolysis of SNAP25 by botulinum toxins A and E. SNAP25 plays a secondary role as a Q-SNARE involved in endosome fusion; the protein is associated with genetic susceptibility to attention-deficit hyperactivity disorder (ADHD).



[View online »](#)

Synonyms: bA416N4.2; dj1068F16.2; FLJ23079; RIC-4; RIC4; SEC9; SNAP; SNAP-25; SUP

### Product images:



Western blot analysis of SNAP25 in SH-SY5Y lysates using SNAP25 antibody.