

## Product datasheet for **TA385290**

### SNAIL (SNAI1) Rabbit Polyclonal Antibody

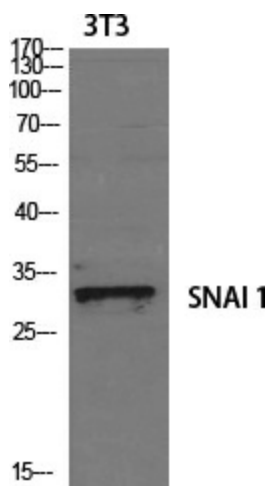
#### Product data:

Product Type:	Primary Antibodies
Applications:	ELISA, IF, IHC, WB
Recommended Dilution:	WB: 1/500 IHC: 1/100 ICC/IF: 1/200 ELISA: 1/5000
Reactivity:	Human, Mouse
Host:	Rabbit
Isotype:	IgG
Clonality:	Polyclonal
Immunogen:	The antiserum was produced against synthesized peptide derived from human SNAI1. AA range:215-264
Formulation:	Liquid in PBS containing 50% glycerol, 0.5% BSA and 0.02% sodium azide, pH 7.3.
Concentration:	lot specific
Purification:	Affinity Purified
Conjugation:	Unconjugated
Storage:	Store at 4°C short term. Aliquot and store at -20°C long term. Avoid freeze/thaw cycles.
Stability:	1 year
Predicted Protein Size:	Observed MW (kDa) 29
Gene Name:	snail family transcriptional repressor 1
Database Link:	<a href="#">Entrez Gene 6615 Human O95863</a>
Background:	Swiss-Prot Acc.O95863.
Synonyms:	dj710H13.1; SLUGH2; SNA; SNAH



[View online »](#)

## Product images:



Western blot analysis of SNAI1 in 3T3 lysates using SNAI1 antibody.