

Product datasheet for **TA385288M**

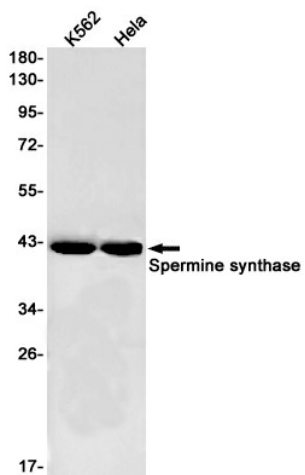
Spermine synthase (SMS) Rabbit Monoclonal Antibody [Clone ID: R05-5J5]

Product data:

Product Type:	Primary Antibodies
Clone Name:	R05-5J5
Applications:	WB
Recommended Dilution:	WB: 1/1000
Reactivity:	Human
Host:	Rabbit
Isotype:	IgG
Clonality:	Monoclonal
Immunogen:	A synthetic peptide of human Spermine synthase
Formulation:	50mM Tris-Glycine(pH 7.4), 0.15M NaCl, 40% Glycerol, 0.01% Sodium azide and 0.05% BSA
Concentration:	lot specific
Purification:	Affinity Purified
Conjugation:	Unconjugated
Storage:	Store at 4°C short term. Aliquot and store at -20°C long term. Avoid freeze/thaw cycles.
Stability:	1 year
Predicted Protein Size:	Calculated MW: 41 kDa; Observed MW: 41 kDa
Gene Name:	spermine synthase
Database Link:	Entrez Gene 6611 Human P52788
Background:	Swiss-Prot Acc.P52788.Catalyzes the production of spermine from spermidine and decarboxylated S-adenosylmethionine (dcSAM).
Synonyms:	MRSR; SPMSY; SpS; SRS


[View online »](#)

Product images:



Western blot analysis of Spermine synthase in K562, HeLa lysates using Spermine Synthase antibody.